

THE INAUGURAL
GKB CATTLE & BARBER RANCH
SPRING BULL SALE
in Desdemona

12 NOON, THURSDAY, MARCH 16, 2023

GKB Cattle Sale Facility • Desdemona, Texas

86 Registered Hereford Bulls...Horned & Polled



THE INAUGURAL
GKB CATTLE & BARBER RANCH
SPRING BULL SALE
in Desdemona



12 NOON, THURSDAY, MARCH 16, 2023

GKB Cattle Sale Facility • Desdemona, Texas

GPS Address: 7440 TX 16, Desdemona, TX 76445

86 Hereford Bulls Sell...Horned & Polled



Gary & Kathy Buchholz, owners
Gary Buchholz (214) 537-1285 • gary@gkbcattle.com
Jay Creamer (254) 707-2199 • jay@gkbcattle.com
Raymond Gushee (207) 256-7365 • ray@gkbcattle.com
7440 TX 16, Desdemona, TX 76445
gkbcattle.com



Brett Barber (806) 681-2457
Justin Barber (806) 681-5528
Dale & Mary Barber
office@barberranch.com
10175 FM 3138, Channing, TX 79018
Ranch located 60 miles northwest of Amarillo
barberranch.com



Sale Manager:



Dustin N. Layton
(405) 464-2455
laytond@yahoo.com
Chisolm Kinder
(405) 747-4683
laytonauction.com

GKB's 2023 Cattlemen's Congress
Grand Champion Pen of 3 Hereford Bulls
sell as Lots 3-5!



GKB CATTLE & BARBER RANCH SPRING BULL SALE

Welcome to GKB Cattle!



GARY & KATHY BUCHHOLZ

Dear Friends,

It is with great pleasure that we welcome you to our first Hereford Bull Sale with Barber Ranch. GKB Cattle and the Barber Family have worked diligently together to create an offering that we are both proud of. We have enjoyed our friendship and partnership with Barbers over the past years and are excited to have the opportunity to team together and offer these Hereford bulls to customers.

We have had an exciting year in 2023 so far and look forward to what the rest of the year will bring. We started off with having the Grand Champion Pen of 3 Hereford Bulls at the National Hereford Show at Cattlemen's Congress in Oklahoma City, Oklahoma, in January. These bulls are in the sale offering. We have also completed our sale facility that we are eager to show you in Desdemona, Texas.

We are very proud of the bulls that make up this offering, as the quality runs deep. Phenotypically, they are a stout and rugged set of bulls that are ready to go to work in the pasture. The bulls have been through a stringent selection process, where emphasis is put on structural integrity, muscularity, real-world performance, and fleshing ease. It has also always remained our priority that they must start with good feet and legs.

When making our selections at GKB, we have always placed a strong emphasis on the maternal aspect of our herd sire battery. We believe that every great breeding bull is backed by an even better female. Maternal stability increases performance, fertility and longevity, all of which are essential traits of the modern-day beef production cycle. Through focusing on superior sire selection, we can achieve these traits.

Our program is geared toward producing cattle that are profitable for the entire industry. We have an extensive ET and AI program that gives us the ability to be very selective with our matings, enabling us to continue to produce superior genetics. We also utilize individual performance records, ultrasound and testing on our bulls to ensure what we offer is something we can stand behind. We put a large emphasis on producing bulls with exceptional EPDs and are able to create **a great selection of both calving ease and performance bulls** to choose from.

Come early and view what we have to offer your program. Videos of the sale bulls are available at superiorlivestock.com. We are offering herd bulls for purebred operations, as well as bulls designed to perform in commercial herds throughout the United States.

We truly believe that the individuals in this offering have a ton of potential to be sires with true impact and influence within the beef business. Your success is our success! We want to also thank all of our customers for their continued support, as we wouldn't be able to do this without them. We can't wait to see you in Desdemona!

Gary and Kathy Buchholz
GKB Cattle



JAY CREAMER
Hereford Manager



RAYMOND GUSHEE
Hereford Herdsman



BRIAN PEARSON
Waxahachie Cow Man



COLTON WAGONER
Waxahachie Cow Man

GKB Cattle Contacts

Gary Buchholz (214) 537-1285 • Kathy Buchholz (214) 537-1306

Jay Creamer (254) 707-2199 • Raymond Gushee (207) 256-7365

Andrew Conley, Brangus Manager (706) 781-8656 • Stephen Trichel, Brahman Manager (936) 349-6354

Jeremy Keith (254) 431-7811

Welcome from Barber Ranch

Dear Fellow Cattlemen & Cattlewomen,

On behalf of the Barber family, we would like to thank you for your interest in our offering and welcome everyone to our inaugural Spring Bull Sale with our great friends Gary and Kathy Buchholz. GKB Cattle has long been one of the top producers of Hereford genetics, and our family is very honored to have the opportunity to partner with them for what we feel will be one of the highest quality offerings of Hereford bulls this spring anywhere in the country. Beyond offering the Champion Pen of Three bulls and the triple Champion Horned Hereford bull at the Cattlemen's Congress, Denver and Fort Worth this past January, this sale is chock full of cutting-edge genetics that will perform for both registered and commercial herds.



From left: **JUSTIN, TERRI, DALE, MARY, JASON & BRETT BARBER**

The goal at Barber Ranch and GKB Cattle is to produce the best Hereford cattle possible. Most all of these bulls have been DNA tested and have genomically enhanced EPDs, which improves their EPD accuracy tremendously. There is enough data backing these bulls to predict how their calves will perform before you ever turn them out. In addition to their EPD profiles, the top qualities we look for are cattle with eye appeal and great phenotype. We breed our cattle to have more muscle, body, bone and style than the typical Hereford herd. You will also see in this offering that over the last few years we have selectively bred for cattle that are dark red and have extra pigment.

This set of bulls we are offering contains a variety of horned, polled, and homozygous polled Herefords. We truly believe that whether you are looking for a new herd sire to put on your purebred cows, or if you need a new bull to turn out with your Angus or Brahman-influenced herd, you can find one here to suit your needs. Many of our Barber Ranch bull customers have topped their local markets with BR-sired calves as well as sold extremely high on Superior Livestock Auction over the years.

We encourage you to invest with confidence, knowing that **your purchases are backed by a 100% satisfaction guarantee**. With the opportunity to buy from two of the most prominent US breeding programs in one place, there is no better time to strengthen your herd. Selecting high performing, efficient bulls to sire your next calf crop is an important economic decision that **YOU** can control.

To our past and future customers and to all those who make this possible, THANK YOU and WELCOME to our inaugural spring auction. We look forward to seeing you in Desdemona!

The Dale Barber Family



Barber Ranch Contacts

Brett Barber (806) 681-2457 • Justin Barber (806) 681-5528
Dale Barber (806) 673-1965 • Mary Barber (806) 930-6917
Terri Barber (817) 727-6107 • Jason Barber (817) 718-5821
Rylee Barber (806) 676-0098 • Bryden Barber (309) 323-2715

Sale schedule **3.16.2023**

The sale bulls will be at the GKB Cattle Sale Headquarters in Desdemona, Texas, for viewing beginning Thursday, March 9th.

If you would like to view the bulls prior to that Thursday, please contact either GKB Cattle or Barber Ranch.

You are more than welcome to view the bulls at your convenience.

THURSDAY, MARCH 16

Doughnuts, juice and coffee will be available all morning.

Lunch will be served at 11 a.m.

Sale begins at 12 noon.

in Desdemona

Sale information

SALE DAY CONTACTS

Gary Buchholz(214) 537-1285
Kathy Buchholz(214) 537-1306
Jay Creamer(254) 707-2199
Raymond Gushee(207) 256-7365
Brett Barber(806) 681-2457
Justin Barber(806) 681-5528
Dale Barber(806) 673-1965
Mary Barber(806) 930-6917

SALE DAY STAFF & REPRESENTATIVES

Dustin Layton, Auctioneer(405) 464-2455
Chisolm Kinder, Layton Auction Services(405) 747-4683
Cord Weinheimer, *Hereford World*(830) 456-3749
Sydney Howell, Texas Hereford Assn.(940) 577-1301
Jim Banner, *Southern Livestock Standard*(210) 867-6862
Phil Stoll, *Weekly Livestock Reporter*(817) 366-7332
Colton Pratz, *Oklahoma Cowman*(405) 385-1054
Juston Stelzer, SS Auction Service(817) 992-7059
Mark McClintock, Consultant(325) 650-4223

HOTEL ACCOMMODATIONS

Hampton Inn & Suites(254) 918-5400
910 S. Harbin Drive, Stephenville, TX

AIR TRANSPORTATION

The Dallas/Fort Worth International Airport, Irving, TX, is approximately two hours from the GKB Sale Headquarters. Love Field, Dallas, TX, is approximately two hours from the GKB Sale Headquarters.

"SIGHT-UNSEEN GUARANTEE"

To make buying easy, we offer a sight-unseen guarantee.
Leave a bid...buy over the phone...buy through Superior.
If they don't meet your approval, they come home. It's that simple.

INSURANCE

Livestock mortality insurance will be available sale day.
Jim Bessler, James F. Bessler, LLC • (815) 762-2641

View the videos online:

gkbcattle.com
barberranch.com

If you are unable to attend the sale, please log on to **bid.superiorlivestock.com** for online bidding, or give us a call and we can assist you with your purchases.

GKB CATTLE & BARBER RANCH SALE TERMS & CONDITIONS

TERMS: Cash or check. Cattle will be sold to the highest bidder. The auctioneer shall settle any disputes as to bids. All cattle are to be paid for by the purchaser during or immediately following the sale and will not be released until after settlement has been made. Each animal will be at the purchaser's risk immediately after it is sold.

HEALTH: The health of the cattle selling is excellent. Each animal will be accompanied by an individual health certificate for immediate interstate shipment. **Note:** If bulls should go to a state that requires additional testing, bulls will be delivered to the new owner after testing is completed.

GUARANTEE: Unless stated otherwise, each bull will sell under the Suggested Terms and Conditions of the American Hereford Association.

BREEDING GUARANTEE: Bulls sold in this sale are fertility tested and are guaranteed by the owners to be breeders, provided they are properly handled and cared for by the purchaser. Any bull failing to breed after a trial of six months may be returned to the seller **if in good condition**. The seller reserves the right to try said bull for six months, and if he proves a breeder to return him to the buyer at buyer's expense. If the bull proves a non-breeder, the bull will be replaced or credit will be issued for the next year's sale at the purchase price minus salvage value of the bull. Seller is not liable for bulls lost due to injury or death.

ANNOUNCEMENTS: Announcements made sale day from the auction block will take precedence over statements in the catalog or other advertising. We reserve the right to withdraw any sale lot not meeting our specifications prior to sale time.


LIABILITY: All persons who attend the sale do so at their own risk. Neither the owners nor any other persons connected with the sale assume liability, legal or otherwise, for accidents or loss of property.

GKB Cattle and Barber Ranch reserve the right to collect, freeze and use semen within their respective herds on any bull sold in this sale. Semen collection would be done at GKB Cattle or Barber Ranch's expense and the buyer's convenience.

• • • • •

GKB Cattle and Barber Ranch reserve all cloning rights on all bulls selling.

SALE CATALOG PREPARED BY LAYTON AUCTION SERVICES • (405) 464-2455 • LAYTOND@YAHOO.COM • WWW.LAYTONAUCTION.COM

PRODUCED BY SOUTHWEST TYPESTYLES • (405) 317-1743 • SWTYPE@GMAIL.COM 

THURSDAY, MARCH 16, 2023 • DESDEMONA, TEXAS



ABSENTEE BIDDERS: HOW TO PARTICIPATE ON THE PHONE OR ONLINE

We have made preparations to bid and buy livestock through Superior Livestock Auction for buyers unable to attend in person on sale day. Please note that all of the lots in the sale will also be available for viewing online prior to sale day at: bid.superiorlivestock.com

Here's How It Works...

Viewing the Auction. The auction will be broadcast online at Bid.SuperiorLivestock.com. The pre-recorded videos will also be hosted there. You do not need an account just to watch the auction or view videos of the sale offering.

Online Bidding. Go to Bid.SuperiorLivestock.com for Superior's new online bidding platform. If you have not registered there before, you will need to create an account. The first time you register an account, you will receive a confirmation e-mail that you must click on. Once you have completed this, select the auction you would like to bid on and click the "Request a Buyer Number" button. The first time you request a buyer number, you will be sent a confirmation code via text. Enter that code in the login portal and you will receive a buyer number. This two-step verification process will only have to be done once; in the future, you will be able to simply login and request a buyer number and receive it instantly for any auction. Once you have successfully registered and received a buyer number, it will show your name and buyer number on both the video preview page and the online bidding page when you are logged in. If you have an account at LiveAuctions.tv, you may skip the registration process and use those login credentials to request a buyer number, as LiveAuctions is a division of Superior Livestock. For more details on registering an account and also how to bid, you may watch a tutorial at Bid.SuperiorLivestock.com/how-it-works

Turn in Bids Over the Phone. This is Superior's traditional method of buying cattle and is the suggested process for anyone who does not have consistent, high-speed internet. You still must register an account at Bid.SuperiorLivestock.com and request a buyer number. Once you receive a buyer number, you will see the bid line phone number. Just watch the auction online and call in at least two lots ahead of the lot you are looking to bid on. A Superior Livestock representative will be with you on the phone and will assist you in placing bids.

Buyers will be contacted by the ranch after the sale for payment and delivery details.

FOR HELP WITH REGISTRATION OR ANY PART OF THE BIDDING PROCESS, PLEASE CALL SUPERIOR AT (800) 422-2117.



ALL BULLS IN THIS SALE QUALIFY FOR SUPERIOR PROGRESSIVE GENETICS

Superior Progressive Genetics (SPG) is a Value Added Program launched by Superior Livestock Auction to create a premium for commercial cattlemen when they sell calves on Superior by identifying load lots of cattle sired exclusively by bulls purchased directly from qualified seed stock producers. SPG brings attention to the investment commercial cattlemen have made by doing business with leading seed stock producers. Barber Ranch or Express Ranches and their bull buying customers will be recognized by branding the SPG icon and the Barber Ranch or Express Ranches logo on qualified load lots as the cattle sell on Superior's video sales live on television and the internet. In addition to the qualified lots being identified on television, the lots will also be branded as "SPG" in Superior Livestock Auction's print and web sale catalogs.

Additional Benefits to Commercial Cattlemen Selling on Superior:

- ✓ Doing business with a reputable company who has your best interest in mind.
- ✓ Superior ties the commercial and purebred cattle industry together full circle.
- ✓ Largest cattle auction in North America along with the largest active buyer list.
- ✓ Can sell on contract to take advantage of current market conditions and deliver at a later date.
- ✓ Established premiums for cattle on good health programs.
- ✓ Established premiums for many Value Added Programs.
- ✓ Cattle are sold "country fresh" direct from the ranch, resulting in less stress.
- ✓ Seller determines weighing conditions.
- ✓ Seller does not have the expense of trucking.
- ✓ Payment is guaranteed to sellers through Superior's bonded custodial account.

For more information, contact Superior at (800) 422-2117

or visit www.SuperiorLivestock.com.



Hughes Trailers

Building Custom Trailers and Flatbeds since 2005

25900 I-27, Canyon, Texas • (806) 499-3113

Call for Pricing or Availability

Website Updated Daily

www.HughesRanchTrailers.com



Attention: Bull Buyers

WIN A HUGHES TRAILER!

A custom built trailer will be given away at the conclusion of the sale. Your buyer number will be entered in a drawing each time you purchase a bull in this sale. The number drawn will be the recipient of a custom built trailer manufactured by Hughes Trailers in Canyon, Texas. The more you buy, the more chances you have to win! Need not be present to win.

Using EPDs as Selection Tools

Cattle Evaluations use the term Expected Progeny Difference (EPD) to express genetic transmitting ability of a sire for the various traits listed. An EPD is a prediction of how future progeny of a sire are expected to perform in a particular trait, relative to other sires in the analysis. The key word is "difference." The EPD itself does not imply "good" or "bad" performance; rather, the EPD gives a prediction of the average "difference" to expect in the performance of a sire's progeny relative to other sires in the same analysis.

The EPD for a given trait on each animal in the analysis is compared to every other animal in the analysis. The EPD is reported as a plus or minus value in the unit which the trait is measured. EPD accuracies on non-parent animals are relatively low and are not reported in this catalog. The American Hereford Association (AHA) currently produces expected progeny differences (EPDs) for 17 traits and calculates three profit indexes. AHA's genetic evaluation makes use of a Marker Effects Model that allows the calculation of EPDs by incorporating the pedigree, phenotypic and genomic profile of an animal.

Hereford EPDs and \$ Indexes included in our sale catalog are:

Calving Ease Direct (CED) Based on calving ease scores and birth weights and measured on a percentage. CED EPD indicates the influence of the sire on calving ease in females calving at two years of age. For example, if sire A has a CED EPD of 6 and sire B has a CED EPD of -2, then you would expect on average if comparably mated, sire A's calves would be born with an 8% more likely chance of being unassisted when compared to sire B's calves.

Birth Weight EPD (BW) An indicator trait for calving ease, measured in pounds. For example, if sire A has a BW EPD of 3.6 and sire B has a BW EPD of 0.6, then you would expect on average if comparably mated, sire A's calves would come 3 lb. heavier at birth when compared to sire B's calves. Larger BW EPDs usually, but not always, indicate more calving difficulty.

Weaning Weight EPD (WW) An estimate of pre-weaning growth, measured in pounds.

Yearling Weight EPD (YW) An estimate of post-weaning growth, measured in pounds.

Scrotal Circumference EPD (SC) Measured in centimeters and adjusted to 365 days of age, SC EPD is the best estimate of fertility. It is related to the bull's own semen quantity and quality and is also associated with age at puberty of sons and daughters. Larger SC EPDs suggest younger age at puberty.

Maternal Milk EPD (Milk) The milking ability of a sire's daughters is expressed in pounds of calf weaned. It predicts the difference in average weaning weights of sires' daughters' progeny due to milking ability. This difference in weaning weight is due to total milk production during the entire lactation.

Maternal Milk + Growth EPD (M+G) Reflects what the sire is expected to transmit to his daughters for a combination of growth genetics through weaning and genetics for milking ability. It is an estimate of daughters' progeny weaning weight. It is equal to one-half the sire's weaning weight EPD, plus all of his Milk EPD.

Calving Ease Maternal (CEM) Predicts how easily a sire's daughters will calve at two years of age and measured on a percentage. For example, if sire A has a CEM EPD of 7 and sire B has a CEM EPD of -3, then you would expect on average if comparably mated, sire A's daughters would calve with a 10% more likely chance of being unassisted when compared to sire B's daughters.

Udder Suspension (Uddr) Udder EPDs are reported on a 9 (very tight) to 1 (very pendulous) scoring scale. Differences in sire EPDs predict the difference expected in the sires' daughters' udder characteristics when managed in the same environment.

Teat Size (Teat) Teat EPDs are reported on a 9 (very small) to 1 (very large, balloon shaped) scoring scale. Differences in sire EPDs predict the difference expected in the sires' daughters' udder characteristics when managed in the same environment.

Carcass EPDs

Carcass records are adjusted to an age constant endpoint. Therefore, selection based on any or all of the carcass merit EPD is comparable among cattle at the same age endpoint. For example, selection based on increased EPD for carcass weight will result in heavier carcass weights than those animals with lower EPD for carcass weights when the cattle are harvested at the same age.

Carcass Weight EPD (CW) Carcass weight is a beneficial trait when considering the impact that pounds have relative to end product value. At the same age constant endpoint, sires with higher values for carcass weight will add more pounds of hot carcass weight compared to sires with lower values for carcass weight.

Rib Fat (Fat) Fat EPD reflects differences in adjusted 365-day, 12th-rib fat thickness based on carcass measurements of harvested cattle. Sires with low, or negative, Fat EPDs are expected to produce leaner progeny than sires with higher EPDs. Ultrasound measures are also incorporated into this trait and have been shown to be highly correlated with the performance of slaughter progeny. All data is expressed on a carcass scale.

American Hereford Assn. EPD Averages for 2021-born calves:

CED	BW	WW	YW	SC	Milk	M+G	CEM	Uddr	Teat
+2.9	+2.8	+54	+87	+1.0	+26	+53	+1.8	+1.24	+1.26
CW		Fat		REA	Marb	BMI\$	BIIS	CHBS	
+79		+.001		+.55	+.30	+288	+389	+143	

Ribeye Area EPD (REA) REA EPDs reflect differences in an adjusted 365-day ribeye area measurement based on carcass measurements of harvested cattle. Sires with relatively higher REA EPDs are expected to produce better-muscled and higher percentage yielding slaughter progeny than will sires with lower REA EPDs. Ultrasound measurements are also incorporated into this trait and have been shown to be highly correlated with the performance of slaughter progeny. All data is expressed on a carcass scale.

Marbling Score (Marb) Marbling EPDs reflect differences in an adjusted 365-day marbling score (intramuscular fat (IMF) based on carcass measurements of harvested cattle. Breeding cattle with higher Marb EPDs should produce slaughter progeny with a higher degree of IMF and therefore higher quality grades. Ultrasound measurements are also incorporated into this trait and have been shown to be highly correlated with the performance of slaughter progeny. All data is expressed on a carcass scale.

\$Profit Indexes

Baldy Maternal Index (BMI\$) The Baldy Maternal Index is a maternally focused index that is based on a production system that uses Hereford x Angus cross cows. Progeny of these cows are directed toward Certified Hereford Beef. This index has significant weight on Sustained Cow Fertility, which predicts fertility and longevity of females. There is a slightly positive weight on Weaning Weight, Mature Cow Weight and Milk which accounts for enough growth but ensures females do not increase inputs. There is some negative emphasis on Dry Matter Intake but a positive weighting on Carcass Weight, which is anticipated to provide profitability from finishing of non-replacement females and castrated males. Marbling and Ribeye Area are also positively weighted to keep the harvested progeny successful for CHB. This index is geared to identify Hereford bulls that will be profitable when used in a rotational cross with mature commercial Angus cows.

Brahman Influence Index (BIIS) The Brahman Influence Index is a maternally focused index that is based on a production system that uses Brahman x Hereford cross cows. Progeny of these cows are directed toward a commodity beef market, since Certified Hereford Beef does not accept Brahman-influenced cattle. This index has significant weight on Sustained Cow Fertility, which predicts fertility and longevity of females. There is a slightly positive weight on Weaning Weight, Mature Cow Weight and Milk, which accounts for enough growth but ensures females do not increase inputs. There is some negative emphasis on Dry Matter Intake but a positive weighting on Carcass Weight, which is anticipated to provide profitability in finishing non-replacement females and castrated males. Marbling and Ribeye Area are also positively weighted to keep harvested progeny successful for a variety of commodity based programs. This index targets producers who use Hereford bulls on Brahman-influenced cows.

Certified Hereford Beef Index (CHBS) The Certified Hereford Beef Index is a terminal sire index that is built on a production system where Hereford bulls are mated to mature commercial Angus cows and all progeny will be targeted for Certified Hereford Beef after the finishing phase. This index has significant weight on Carcass Weight to ensure profit on the rail. As well, there is a positive weighting for Average Daily Gain along with a negative weighting on Dry Matter Intake to ensure efficient pounds of growth in the finishing phase. Keep in mind, this production system takes advantage of complimentary breeding with the commercial Angus cow. Although Marbling is weighted positively in this index, a positive weighting for Ribeye Area and a negative weighting for Back Fat are a greater priority in this index to allow for optimum end-product merit. This is the only index that has no emphasis on fertility. Remember that no replacement heifers are being retained.

EPDs are updated weekly by the American Hereford Association, so we cannot guarantee the EPDs listed in the catalog. The Hereford EPDs printed are from the 2/13/23 evaluation of the AHA. View up-to-date EPDs at www.hereford.org.



Genomic-Enhanced EPDs The accuracy of breeding values in young cattle is enhanced with DNA testing. All EPDs included are genomically enhanced for the advantage of enhanced accuracy.

Actual birth weight is included in addition to adjusted 205-day weaning weight, adjusted 365-day yearling weight, adjusted 365-day ribeye area, and adjusted 365-day intramuscular fat score.

The Power of Genomically Enhanced EPDs

The American Hereford Association (AHA) has embraced the use of genomics into their genetic evaluation by launching a first of its kind single step analysis that utilizes the marker effects of specific traits. Likewise, AHA is directly estimating accuracy values rather than approximating. The direct estimation of accuracy results in a more conservative value but a more accurate value than previous methodologies. The AHA is producing the most reliable genetic evaluation that is supported by Whole Herd TPR™ and genomics, which will give prospective buyers added confidence in purchasing young and unproven animals.

Buying animals that have a genomic profile incorporated into their Expected Progeny Difference (EPD) offers many advantages that allow for quicker breed and herd improvement. Below is a table showing the average increase in accuracy when buying a young animal with a Genomic Enhanced EPD (GE-EPD) versus an animal without a GE-EPD. Similarly, an effective progeny number increase is listed by trait that shows how many progeny equate to a genomic enhancement of a young animal (e.g. yearling). That's right, buying a young animal that has been genotyped is like having 2-17 progeny, depending on the trait. The proof gained on young, non-parent animals, through a genomic enhancement is valuable and greatly mitigates the risk and allows for more directed selection.



Each animal tested is recognized with the AHA GE-EPD logo.

AHA Trait	Accuracy Improvement	Effective Progeny Number Increase*
Calving Ease	0.09	17
Birth Weight	0.12	8
Weaning Weight	0.14	12
Yearling Weight	0.16	9
Scrotal Circumference	0.17	6
Mature Cow Weight	0.12	4
Udder Suspension	0.17	7
Teat Size	0.17	7
Carcass Weight	0.11	3
Fat	0.08	2
Rib-Eye Area	0.07	2
Marbling	0.10	3

* Effective Progeny Number Increase (EPNI)- EPNI is the difference gained for genotyped animals versus non-genotyped animals.



Winchester



LOT 1

SELLING 1/3 SEMEN INTEREST & 1/2 POSSESSION AT THE CONCLUSION OF HIS SHOW CAREER



BR ANASTASIA 3023 ET

Maternal granddam of Lot 1

1
lot

BR GKB WINCHESTER 1314

44300997 • DOB 9/19/21 • TAT. 1314 • Horned
{DLF,HYF,IEF,MSUDF}

BR BELLE AIR 6011 {CHB}
BR BELLE AIR E133 ET
BR ABIGAIL 8130 ET

CRR 719 CATAPULT 109 {SOD}
BR ANASTASIA E117 ET
BR ANASTASIA 3023 ET



BAR S LHF 028 240 {CHB}
BR BELLE 4082 ET
DM BR SOONER {CHB}
BR GABRIELLE 5082
TH 122 711 VICTOR 719T {SOD}
CRR 4037 ECLIPSE 808
UPS TCC NITRO 1ET {SOD}
BR ABIGAIL 8130 ET

Act. BW

86

Adj. WW

761

Adj. YW

1252

Adj. REA

14.3

CED	BW	WW	YW	SC	Milk	M+G	CEM	Uddr	Teat	Adj. IMF
-1.9	+4.4	+78	+127	+1.9	+29	+68	-2.4	+1.20	+1.20	3.18



CW	Fat	REA	Marb	BMIS	BIIS	CHBS
+79	+0.01	+0.55	+0.30	+288	+389	+143



- This is an incredible opportunity to share ownership of the reigning Grand Champion Horned Bull at the 2023 Cattlemen's Congress, National Western and Fort Worth! Winchester is heavily pigmented with tremendous power, bone, foot size and style. You won't come across many bulls with this amount of red meat and muscle coupled with his incredible rib shape, overall dimension and structural integrity.
- Winchester's dam, Anastasia E117, is a young donor that is loaded with the best cow families we have produced, including her mother, Anastasia 3023, who was a past feature high seller at \$120,000 for half interest. Winchester's sire, BR Belle Air E133 ET, was the 2019 AHA Horned Show Bull of the Year.
- Winchester ranks in the top 1% of the breed for WW, YW and SC; top 4% for M+G.

Belle Air K102



LOT 2

SELLING 1/2 SEMEN INTEREST & 1/2 POSSESSION AT THE CONCLUSION OF HIS SHOW CAREER

2
lot

GKB 8688 6011 BELLEAIR K102 ET

44368471 • DOB 3/3/22 • TAT. K102 • Horned
(DLF,HYF,IEF,MSUDF,MDF)

BAR S LHF 028 240 (CHB)
BR BELLE AIR 6011 (CHB)
BR BELLE 4082 ET

TFR KU ROLL THE DICE 1326
MCKY MONROE 8688 ET
JCS TATER TOT 3560

CHURCHILL SENSATION 028X (SOD)
CHURCHILL LADY 078X
GOLDEN OAK OUTCROSS 18U (SOD)
BR CSF BRIELLE 8052 ET
STAR TCF LOCK-N-LOAD 300W ET (CHB)
LH LANGFORD LADY 0253 ET
JCS COOL KAT 6928
JCS MISS 510 EXCELLA 9201

Act. BW
88
Adj. WW
763
Adj. YW
Adj. REA

CED	BW	WW	YW	SC	Milk	M+G	CEM	Uddr	Teat	Adj. IMF
-0.3	+2.8	+66	+113	+1.9	+38	+71	-0.3	+1.20	+1.10	



CW	Fat	REA	Marb	BMIS	BIIS	CHBS
+85	+0.061	+4.8	+3.6	+340	+437	+161



- K102 was the popular Spring Calf Division Champion at the 2023 Cattlemen's Congress, National Western and Fort Worth. He is a dark red, short-marked, freckle-faced son of the immortal BR Belle Air 6011. From the profile, he has the big sweep to his rib cage and is long and level in his top and hip plus extended through his front 1/3. When you get on top of him and from behind, he has incredible shape and width in a structurally sound package. We feel that K102's potential as a herd bull is tremendous.
- K102's dam, 8688, is a tremendous young donor that was campaigned successfully on the show road, capturing Grand Champion at the 2020 National Western Junior Show and Grand Champion at the 2020 Fort Worth Hereford Show for GKB Cattle and Denver McKay. Her mother, JCS Tater Tot, was a National Champion Female.
- K102 ranks in the top 1% of the breed for SC; top 3% for Milk and M+G; top 4% for YW and CHB; top 10% for CW and Marb.



MCKY MONROE 8688 ET
Dam of Lot 2

JCS TATER TOT 3560
Maternal granddam of Lot 2



Champion Pen Bull



LOT 3

SELLING 1/2 SEMEN INTEREST & 1/2 POSSESSION



**GKB'S 2023 CATTLEMEN'S CONGRESS
GRAND CHAMPION PEN OF THREE HEREFORD BULLS**

They sell as Lots 3-5

3
lot

GKB 195C EXTRA DEEP B004 1308

P44271290 • DOB 1/3/21 • TAT. 1308 • Scurred
{DLF,HYF,IEF,MSUDF,MDF}

ECR L18 EXTRA DEEP 9279 {SOD,CHB}
GKB 9279 EXTRA DEEP 195C ET
C 88X NOTICE ME 2067 ET

KJ 968R POLLED SOLUTION 668ZET {SOD}
KJ NELLA SORORITY GAL B004 ET
ANL P606 MARIE ET 90U

GO EXCEL L18 {SOD}
OXH CHRISTI 0028
NJV 98S R117 RIBEYE 88X ET {SOD,CHB}
C NOTICE ME ET
MSU TCF REVOLUTION 4R {SOD}
KJ 2403 ROBINETTE 968R
PW VICTOR BOOMER P606 {SOD}
CIRCLE-D 9F MARIE 31L

Act. BW
75
Adj. WW
642
Adj. YW
1175
Adj. REA

CED	BW	WW	YW	SC	Milk	M+G	CEM	Uddr	Teat	Adj. IMF
+2.9	+2.3	+55	+75	+0.9	+28	+55	0.0	+1.20	+1.30	3.09



CW	Fat	REA	Marb	BMIS	BIIS	CHBS
+73	+0.11	+0.78	+0.12	+402	+473	+121



- 1308 was the leadoff bull in our Grand Champion Pen of Three Hereford Bulls at the 2023 Cattlemen's Congress. Unbelievable phenotype, stoutness and structure best describe this balanced trait son of our herd bull Extra Deep 195C. 1308 is an easy fleshing, dark red, short-marked bull that has added pigment and style.
- Ranks in the top 3% of the breed for REA.

Champion Pen Bull



LOT 4

4 **GKB 6034 CLAYTON 6068 1110**

44231741 • DOB 2/6/21 • TAT. 1110 • Horned
(DLF,HYF,IEF,MSUDF,MDF)

BAR S LHF 028 240 (CHB)
JCS GKB 240 CLAYTON 6034
JCS 5216 DOMINETTE 3511

NJW 73S W18 HOMETOWN 10Y ET (SOD,CHB)
BOYD 108X DOREEN 6068 ET
NJW 8S 4037 DOREEN 108X

CHURCHILL SENSATION 028X (SOD)
CHURCHILL LADY 078X
UPS DOMINO 5216 (SOD)
JCS FOXY LADY 9147 ET
SHF WONDER M326 W18 ET (CHB,SOD)
NJW P606 72N DAYDREAM 73S
THM DURANGO 4037 (SOD)
NJW 9126J K014 DOREEN 8S ET

Act. BW
95
Adj. WW
739
Adj. YW
1242
Adj. REA

CED	BW	WW	YW	SC	Milk	M+G	CEM	Uddr	Teat	Adj. IMF
+5.3	+2.9	+59	+95	+1.0	+43	+72	+2.2	+1.40	+1.60	2.80

CW	Fat	REA	Marb	BMIS	BIIS	CHBS
+71	+0.041	+0.34	+0.18	+412	+495	+121

- 1110 was a member of the Grand Champion Pen of Three Hereford Bulls at the 2023 Cattlemen's Congress. We love the extra length and style he offers coupled with his excellent muscle shape and big hip. He is short marked with huge feet and sound from the ground up. 1110 offers added calving ease with impressive growth and excellent maternal value.
- His mother is an excellent 10Y daughter that came from Boyd Beef Cattle and is doing a tremendous job at GKB Cattle.
- Ranks in the top 1% of the breed for Milk and Teat; top 2% for M+G; top 10% for BMIS.



Champion Pen Bulls



LOT 5



BR 124Y TRAVIS E132 ET
Sire of Lot 6



LOT 6

5
lot

GKB 4892 CROSSFIT 670D 1140

44231756 • DOB 2/1/21 • TAT. 1140 • Horned
{DLF,HYF,IEF,MSUDF,MDF}

GOLDEN OAK OUTCROSS 18U {SOD}
CSF RAMSEY CROSSFIT 4892 ET
CSF BR 435 TEVA 308T ET

GKB 88X LARAMIE B293
BF B293 WILD ONE 670D
BF 2153 WILD ONE 608S

GOLDEN-OAK FUSION 3S {SOD}
GOLDEN-OAK 60D MALLORY 15M
DM BR SOONER {CHB}
CL 1 DOMINET 496 1ET
NJW 98S R117 RIBEYE 88X ET {SOD,CHB}
GKB S&S GOLD APRIL B928 ET
BR WILDFIRE 2153
ELM-LODGE LA SENZA ET 1L

Act. BW
84
Adj. WW
687
Adj. YW
1164
Adj. REA

CED	BW	WW	YW	SC	Milk	M+G	CEM	Uddr	Teat	Adj. IMF
-1.5	+4.4	+61	+96	+1.4	+37	+67	+0.9	+1.30	+1.50	2.25



CW	Fat	REA	Marb	BMIS	BIIS	CHBS
+74	+0.01	+61	-0.04	+381	+448	+111

- 1140 was a member of the Grand Champion Pen of Three Hereford Bulls at the 2023 Cattlemen's Congress. He is a dark red, short-marked bull with all the extras—extra shape, width, stoutness, body shape, overall design and phenotype.
- This Crossfit son is out of BF B293 Wild One 670D, who is doing an excellent job raising cattle with eye appeal and growth. The maternal values on this bull are great, and he will leave a set of daughters that will make your mouth water.
- Ranks in the top 2% of the breed for Teat; top 4% for Milk and top 5% for M+G.

6
lot

GKB E132 TRAVIS 642D 1614

P44280868 • DOB 4/9/21 • TAT. 1614 • Polled
{DLF,HYF,IEF,MSUDF,MDF}

BR COPPER 124Y {CHB}
BR 124Y TRAVIS E132 ET
BR BELLE 4082 ET

BR HUTTON 4040ET
BR AMBER 642D
BR AMBER 9086 ET

BR CSF COPPER ET {CHB}
BR ABIGAIL 8130 ET
GOLDEN OAK OUTCROSS 18U {SOD}
BR CSF BRIELLE 8052 ET
NJW 73S 980 HUTTON 109Z ET
BR ZOEY 8143 ET
BR MOLER ET
BR DM AMBER 6061

Act. BW
80
Adj. WW
746
Adj. YW
1399
Adj. REA
14.2

CED	BW	WW	YW	SC	Milk	M+G	CEM	Uddr	Teat	Adj. IMF
-3.0	+5.6	+72	+115	+1.1	+29	+65	-1.8	+1.10	+1.20	3.30



CW	Fat	REA	Marb	BMIS	BIIS	CHBS
+95	+0.021	+67	+0.09	+325	+408	+150



- 1614 was the alternate bull for the Cattlemen's Congress Pen of Three Bulls. Although he is younger by a few months, he doesn't give up much growth to his pen mates. Performance oriented son of Travis that is backed by some of the great cow families that the Barber Ranch has. Longer bodied, well balanced bull with added phenotype.
- Ranks in the top 1% of the breed for CW; top 2% for WW; top 3% for YW; top 5% for CHB; top 10% for M+G and REA.

son of Makers Mark



LOT 7

SELLING 3/4 SEMEN INTEREST & FULL POSSESSION



GREEN JCS MAKERS MARK 229G ET

Sire of Lot 7

7
lot

GKB MAKERS MARK K 116 ET

P44368470 • DOB 2/14/22 • TAT. K 116 • Homozygous Polled
{DLF,HYF,IEF,MSUDF,MDF}

BOYD 31Z BLUEPRINT 6153
GREEN JCS MAKERS MARK 229G ET (CHB)
JDH AH MERCEDES 11E ET

NJW 79Z Z311 ENDURE 173D ET (CHB)
LOEWEN DMF RITA B42 G21 ET
LOEWEN 77 48 MISS 344N 4RB42ET

R LEADER 6964 (SOD)
NJW 91H 100W RITA 31Z ET
JDH VICTOR 719T 33Z ET (CHB)
AH MS 25L RUMBLER 19Z (DOD)
KCF BENNETT ENCORE Z311 ET (SOD,CHB)
BW 91H 100W RITA 79Z ET
MSU TCF REVOLUTION 4R (SOD)
PCR JACKLYN NIKOLE 344N

Act. BW
67
Adj. WW
616
Adj. YW
Adj. REA

CED	BW	WW	YW	SC	Milk	M+G	CEM	Uddr	Teat	Adj. IMF
+7.0	+0.4	+64	+109	+1.5	+32	+65	+5.8	+1.40	+1.50	

CW	Fat	REA	Marb	BMI\$	BIIS	CHBS
+86	+.061	+.66	+.20	+405	+493	+151



- Homozygous Polled and recommended for use on heifers.
- K116 is without a doubt one of the most intriguing herd bull prospects in the sale. He is sired by the homozygous polled AI sire Makers Mark that excels at calving ease, and his dam, G21, is a flushmate sister to the famed Genesis. She was our pick of the three full sisters that were the Grand Champion Pen of Three Hereford Females at the 2020 National Western because of her added style.
- Individually, K116 is short marked and dark red with pigment. Easy fleshing and phenotypically pleasing with extra length, he is level hipped with great muscle shape and structurally correct.
- Ranks in the top 2% of the breed for Teat; top 5% for YW and Udder; top 10% for BW, WW, SC, M+G, CW and CHB.



LOEWEN DMF RITA B42 G21 ET

Dam of Lot 7



LOT 8



BR GKB TRENDING 0104
Sire of Lots 8 & 9

8
lot

BR TRENDING K016 ET

P44350484 • DOB 1/5/22 • TAT. K016 • Homozygous Polled
{DLF,HYF,IEF,MSUDF}

BR ENCORE E120A ET
BR GKB TRENDING 0104
BR PISTOL ANNIE 4077 ET

NJW 79Z Z311 ENDURE 173D ET (CHB)
LOEWEN DMF GRACE B42 G17 ET
LOEWEN 77 48 MISS 344N 4RB42ET



KCF BENNETT ENCORE Z311 ET {SOD,CHB}
BR ABIGAIL 8130 ET
KJ HVH 33N REDEEM 485T ET {SOD}
BR GABRIELLE 5082

KCF BENNETT ENCORE Z311 ET {SOD,CHB}
BW 91H 100W RITA 79Z ET
MSU TCF REVOLUTION 4R {SOD}
PCR JACKLYN NIKOLE 344N

Act. BW	72
Adj. WW	732
Adj. YW	1235
Adj. REA	14.9

CED	BW	WW	YW	SC	Milk	M+G	CEM	Uddr	Teat	Adj. IMF
+2.4	+0.9	+73	+125	+1.6	+24	+61	+3.6	+1.20	+1.20	2.20

CW	Fat	REA	Marb	BMIS	BIIS	CHBS
+89	+0.01	+58	+31	+329	+428	+154



- Homozygous Polled.
- K016 is one of the first sons of the exciting feature lot of the Night at Remington Park Sale, BR GKB Trending, who sold for \$80,000 for 1/3 semen interest for a valuation of \$240,000. K016's dam, G17, is a flushmate sister to the popular AI sire Genesis and was a member of the Grand Champion Pen of Three Hereford Females at the 2020 National Western; G17 is just beginning to write her own chapter at the Barber Ranch.
- K016 is a big spread herd bull prospect that is short marked and dark red with goggle eyes. He is a muscular bull with a ton of rib shape in an easy fleshing, sound package with eye appeal.
- Ranks in the top 1% of the breed for YW; top 2% for WW; top 3% for SC; top 4% for CW; top 5% for CHB; top 10% for Marb.
- Full brother sells as Lot 9.



LOT 9

9
lot

BR TRENDING K018 ET

P44350486 • DOB 1/6/22 • TAT. K018 • Homozygous Polled
{DLF,HYF,IEF,MSUDF}

BR ENCORE E120A ET
BR GKB TRENDING 0104
BR PISTOL ANNIE 4077 ET

NJW 79Z Z311 ENDURE 1730 ET (CHB)
LOEWEN DMF GRACE B42 G17 ET
LOEWEN 77 48 MISS 344N 4RB42ET



KCF BENNETT ENCORE Z311 ET {SOD,CHB}
BR ABIGAIL 8130 ET
KJ HVH 33N REDEEM 485T ET {SOD}
BR GABRIELLE 5082
KCF BENNETT ENCORE Z311 ET {SOD,CHB}
BW 91H 100W RITA 79Z ET
MSU TCF REVOLUTION 4R {SOD}
PCR JACKLYN NIKOLE 344N

Act. BW
75
Adj. WW
638
Adj. YW
1180
Adj. REA
14.2

CED	BW	WW	YW	SC	Milk	M+G	CEM	Uddr	Teat	Adj. IMF
+3.7	+1.8	+66	+112	+1.4	+24	+57	+4.2	+1.20	+1.20	2.82



CW	Fat	REA	Marb	BMIS	BIIS	CHBS
+85	+0.061	+73	+37	+329	+426	+146



- Homozygous Polled.
- K018 is another Trending out of G17 that we like extremely well. Like his full brother in many attributes, except he excels in phenotype with more marbling. This homozygous polled herd bull prospect will be at the top of many serious cattlemen's list.
- Ranks in the top 5% of the breed for YW and Marb; top 10% for WW, CW, REA, CHB.
- Full brother sells as Lot 8.



LOEWEN DMF GRACE B42 G17 ET

Dam of Lots 8 & 9



LOT 10



LOEWEN GENESIS G16 ET

Sire of Lots 10–12; full brother to dams of Lots 7–9

10
lot

BR GENESIS K023 ET

P44350487 • DOB 1/8/22 • TAT. K023 • Homozygous Polled
{DLF,HYF,IEF,MSUDF}

NJW 79Z Z311 ENDURE 173D ET (CHB)
LOEWEN GENESIS G16 ET (CHB)
LOEWEN 77 48 MISS 344N 4RB42ET

CRR 719 CATAPULT 109 (SOD)
BR ANASTASIA E109 ET
BR ANASTASIA 3023 ET



KCF BENNETT ENCORE Z311 ET (SOD,CHB)
BW 91H 100W RITA 79Z ET
MSU TCF REVOLUTION 4R (SOD)
PCR JACKLYN NIKOLE 344N
TH 122 711 VICTOR 719T (SOD)
CRR 4037 ECLIPSE 808
UPS TCC NITRO 1ET (SOD)
BR ABIGAIL 8130 ET

CED	BW	WW	YW	SC	Milk	M+G	CEM	Uddr	Teat	Adj. IMF
-1.5	+5.1	+74	+120	+1.0	+39	+76	-0.1	+1.10	+1.10	3.57



CW	Fat	REA	Marb	BMI\$	BI\$	CHBS
+89	+0.051	+0.53	+0.38	+409	+518	+163



- Homozygous Polled.
- K023 is a dark red, goggle-eyed son of the great Genesis that has tremendous muscle shape and depth of rib, and he is structurally correct and sound. He is stout made from the ground up with excellent maternal traits. His now-deceased donor dam, Anastasia E109, was one beautiful female with a picture-perfect udder that was a daughter of 3023. This herd bull prospect will leave a tremendous set of daughters and sire excellent bulls with growth and carcass.
- Ranks in the top 1% of the breed for M+G; top 2% for WW, YW and Milk; top 3% for CW and CHB; top 5% for Marb; top 10% for BMI and BI.
- Full brother sells as Lot 11.



LOT 11

BR ANASTASIA E109 ET
Dam of Lots 10 & 11

11
et

BR GENESIS K017 ET

P44350485 • DOB 1/6/22 • TAT. K017 • Homozygous Polled
{DLF,HYF,IEF,MSUDF}

NJW 79Z Z311 ENDURE 173D ET (CHB)
LOEWEN GENESIS G16 ET (CHB)
LOEWEN 77 48 MISS 344N 4RB42ET

CRR 719 CATAPULT 109 (SOD)
BR ANASTASIA E109 ET
BR ANASTASIA 3023 ET

KCF BENNETT ENCORE Z311 ET (SOD,CHB)
BW 91H 100W RITA 79Z ET
MSU TCF REVOLUTION 4R (SOD)
PCR JACKLYN NIKOLE 344N
TH 122 711 VICTOR 719T (SOD)
CRR 4037 ECLIPSE 808
UPS TCC NITRO 1ET (SOD)
BR ABIGAIL 8130 ET

Act. BW
83
Adj. WW
645
Adj. YW
1301
Adj. REA
13.9

CED	BW	WW	YW	SC	Milk	M+G	CEM	Uddr	Teat	Adj. IMF
-1.9	+6.4	+78	+129	+1.1	+34	+73	-0.3	+1.10	+1.10	2.92



CW	Fat	REA	Marb	BMI\$	BII\$	CHBS
+93	+0.021	+70	+1.17	+338	+433	+155



- Homozygous Polled.
- K017 is a big-time performance bred bull with phenomenal phenotype and red meat. Big footed and soggy made son of Genesis that is dark red with added pigment. His mother, Anastasia E109, is no longer with us, so there won't be many more sons like this available and definitely not with the amount of quality that K017 possesses. He will add pounds to your calf crop.
- Ranks in the top 1% of the breed for WW, YW and M+G; top 2% for CW; top 5% for CHB; top 10% for Milk and REA.
- Full brother sells as Lot 10.

12
et

BR GENESIS K043 ET

P44350488 • DOB 1/26/22 • TAT. K043 • Polled
{DLF,HYF,IEF,MSUDF}

NJW 79Z Z311 ENDURE 173D ET (CHB)
LOEWEN GENESIS G16 ET (CHB)
LOEWEN 77 48 MISS 344N 4RB42ET

BAR S LHF 028 240 (CHB)
BR BELLE PEPPER E094 ET
BR BELLE 4082 ET

KCF BENNETT ENCORE Z311 ET (SOD,CHB)
BW 91H 100W RITA 79Z ET
MSU TCF REVOLUTION 4R (SOD)
PCR JACKLYN NIKOLE 344N
CHURCHILL SENSATION 028X (SOD)
CHURCHILL LADY 078X
GOLDEN OAK OUTCROSS 18U (SOD)
BR CSF BRIELLE 8052 ET

Act. BW
84
Adj. WW
732
Adj. YW
1414
Adj. REA
13.2

CED	BW	WW	YW	SC	Milk	M+G	CEM	Uddr	Teat	Adj. IMF
+3.2	+1.8	+67	+114	+1.8	+38	+71	+4.5	+1.20	+1.10	3.47



CW	Fat	REA	Marb	BMI\$	BII\$	CHBS
+83	+0.081	+71	+46	+485	+596	+160



- K043 offers moderate birth with explosive growth, excellent maternal traits and carcass! Dark red, high-quality bull with style, as one would expect by reading his pedigree. His donor dam, Belle Pepper E094, is a full sister to the two-time Denver Supreme Champion BR Belle Air 6011. Like her brother, she is an excellent producer and raised a popular \$16,000 son of Endure in the 2022 fall bull sale.
- Ranks in the top 1% of the breed for SC, BMI and BII; top 2% for M+G; top 3% for YW, Milk, Marb and CHB; top 10% for WW and REA.

sons of Belle Air



LOT 13



BR BELLE AIR 6011

Sire of Lots 13-26 & grandsire of Lots 27-45



LOT 14

13
lot

GKB BELLE AIR 1646

P44309964 • DOB 9/21/21 • TAT. 1646 • Polled
{DLF,HYF,IEF,MSUDF,MDF}

BAR S LHF 028 240 (CHB)
BR BELLE AIR 6011 (CHB)
BR BELLE 4082 ET

KCF BENNETT ENCORE Z311 ET (SOD,CHB)
CMF 175C DOMINETTE 418F
CMF 42X DOMINETTE 175C

CHURCHILL SENSATION 028X (SOD)
CHURCHILL LADY 078X
GOLDEN OAK OUTCROSS 18U (SOD)
BR CSF BRIELLE 8052 ET
SCHU-LAR ON TARGET 22S (CHB,SOD)
KCF MISS REVOLUTION X338 ET
GERBER ANODYNE 001A (CHB)
CMF 791R DOMINETTE 42X

Act. BW
75
Adj. WW
733
Adj. YW
1279
Adj. REA
11.9

CED	BW	WW	YW	SC	Milk	M+G	CEM	Uddr	Teat	Adj. IMF
+10.4	-1.4	+58	+97	+2.4	+34	+63	+7.9	+1.30	+1.40	3.57



CW	Fat	REA	Marb	BMIS	BIIS	CHBS
+71	+0.071	+44	+60	+367	+474	+155



- Recommended for use on heifers.
- 1646 is a calving-ease son of Belle Air with excellent growth. Big scrotated and short marked with extra pigment, he offers an exceptional marbling EPD of +.60. If you are looking for a calving-ease prospect with all the extras and the herd bull look, then he should be at the top of your list.
- His dam is a young daughter of Encore Z311 who records 3@92.3 for BW, 2@103.5 for WW, 2@106.5 for YW, and 2@107 for IMF.
- Ranks in the top 1% of the breed for SC and Marb; top 3% for BW; top 5% for CHB; top 10% for CED.

14
lot

GKB BELLE AIR 1652

44309969 • DOB 9/30/21 • TAT. 1652 • Horned
{DLF,HYF,IEF,MSUDF,MDF}

BAR S LHF 028 240 (CHB)
BR BELLE AIR 6011 (CHB)
BR BELLE 4082 ET

H/TSR/CHEZ/FULL THROTTLE ET
T/R BOBBIE JEAN D117 ET
CRR 88X BOBBIE JEAN 406

CHURCHILL SENSATION 028X (SOD)
CHURCHILL LADY 078X
GOLDEN OAK OUTCROSS 18U (SOD)
BR CSF BRIELLE 8052 ET
H WCC/WB 668 WYARNO 9500 ET (SOD)
R SWEET RED WINE 039
NJW 98S R117 RIBEYE 88X ET (SOD,CHB)
CRR 980 BOBBIE 271

Act. BW
85
Adj. WW
626
Adj. YW
1089
Adj. REA
12.5

CED	BW	WW	YW	SC	Milk	M+G	CEM	Uddr	Teat	Adj. IMF
+4.7	+2.6	+56	+92	+1.2	+36	+64	+2.4	+1.10	+1.10	2.88



CW	Fat	REA	Marb	BMIS	BIIS	CHBS
+65	+0.021	+54	+47	+327	+420	+152



- Dark red, short-marked son of Belle Air with pigment. 1652 is stout made with excellent muscle shape, stout boned and extended.
- Ranks in the top 3% of the breed for Marb; top 5% for Milk and CHB.

sons of Belle Air



LOT 15



LOT 16

15
lot

BR BELLE AIR 1288

P44287878 • DOB 8/24/21 • TAT. 1288 • Scurred
{DLF,HYF,IEF,MSUDF}

BAR S LHF 028 240 (CHB)
BR BELLE AIR 6011 (CHB)
BR BELLE 4082 ET

LJS MARK DOMINO 1321 (CHB)
LOEWEN MISS 1321 F18 ET
/S LADY ON TARGET 5002C ET

CHURCHILL SENSATION 028X (SOD)
CHURCHILL LADY 078X
GOLDEN OAK OUTCROSS 18U (SOD)
BR CSF BRIELLE 8052 ET
LJS MARK DOMINO 0945 (CHB)
LJS MS MARK DOMINO 1125
HYALITE ON TARGET 936 (SOD)
/S LADY DOMINO 9144W

CED	BW	WW	YW	SC	Milk	M+G	CEM	Uddr	Teat	Adj. IMF
+3.4	+3.8	+71	+116	+2.3	+38	+74	+4.3	+1.20	+1.10	3.02



CW	Fat	REA	Marb	BMIS	BIIS	CHBS
+83	+.031	+.70	+.43	+395	+502	+166



- 1288 is a big spread son of Belle Air that has excellent maternal value EPDs and carcass. Red-eyed, short-marked, stout made bull with tons of rib shape and volume. His dam has a unique pedigree to us, for those of you needing a little outcross pedigree.
- Ranks in the top 1% of the breed for SC and M+G; top 2% for CHB; top 3% for WW, YW and Milk; top 4% for Marb; top 10% for REA and BII.

16
lot

BR BELLE AIR 1299

P44300986 • DOB 9/6/21 • TAT. 1299 • Polled
{DLF,HYF,IEF,MSUDF}

BAR S LHF 028 240 (CHB)
BR BELLE AIR 6011 (CHB)
BR BELLE 4082 ET

MM OUTCROSS 1312 ET
BR BRYANNA 5135
BR BRYANNA 1020

CHURCHILL SENSATION 028X (SOD)
CHURCHILL LADY 078X
GOLDEN OAK OUTCROSS 18U (SOD)
BR CSF BRIELLE 8052 ET
GOLDEN OAK OUTCROSS 18U (SOD)
BR CSF BRIELLE 8052 ET
BR CSF COPPER ET (CHB)
BR DM BRYANNA 8021 ET

CED	BW	WW	YW	SC	Milk	M+G	CEM	Uddr	Teat	Adj. IMF
+5.5	+1.5	+61	+96	+1.7	+34	+65	+5.0	+1.40	+1.30	3.87



CW	Fat	REA	Marb	BMIS	BIIS	CHBS
+72	+.081	+.56	+.32	+361	+451	+142



- 1299 is a square hipped, easy fleshing and stout made son of Belle Air with eye appeal. Backed by the Bryanna cow family that has always been consistent producers, his dam had a maternal sister that was a feature high-selling fall pair in the 2018 Barber Ranch cow sale. 1299 is loaded with added maternal value.
- Ranks in the top 3% of the breed for SC; top 10% for Milk, M+G and CHB.

sons of Belle Air



LOT 17

17
lot

BR BELLE AIR 1300

44300987 • DOB 9/6/21 • TAT. 1300 • Horned
{DLF,HYF,IEF,MSUDF}

BAR S LHF 028 240 (CHB)
BR BELLE AIR 6011 (CHB)
BR BELLE 4082 ET

SHF ALL STAR 42X A191 (CHB)
LOEWEN STAR 42Y 14C
CT MISS TANK 42Y (DOD)

ATLAS
GE-EPD

CHURCHILL SENSATION 028X (SOD)
CHURCHILL LADY 078X
GOLDEN OAK OUTCROSS 18U (SOD)
BR CSF BRIELLE 8052 ET
K&B SENTINEL 0042X (SOD,CHB)
SHF MISS M326 T08 ET
NJV FHF 9710 TANK 45P (SOD)
CT MISS EXTENSION 42N

Act. BW
84
Adj. WW
768
Adj. YW
1325
Adj. REA
12.7

CED	BW	WW	YW	SC	Milk	M+G	CEM	Uddr	Teat	Adj. IMF
+0.6	+3.2	+74	+112	+1.9	+38	+75	+1.9	+1.20	+1.20	5.36

Barber
RANCH

CW	Fat	REA	Marb	BMI\$	BIIS	CHBS
+76	+0.071	+39	+60	+370	+493	+164

SCHB

- High performance son of Belle Air that is stout made and loaded with pigment. He is full of maternal value and marbling. On the cow side, he goes back to an All Star daughter out of the CT Miss Tank 42Y cow. His dam records 5@116 for IMF.
- Ranks in the top 1% of the breed for SC, M+G and Marb; top 2% for WW; top 3% for Milk and CHB; top 4% for YW.



LOT 18

18
lot

BR BELLE AIR 1318

P44301001 • DOB 9/25/21 • TAT. 1318 • Polled
{DLF,HYF,IEF,MSUDF}

BAR S LHF 028 240 (CHB)
BR BELLE AIR 6011 (CHB)
BR BELLE 4082 ET

BR BOLD GOLD 4012 ET
BR TERRI D619
BR TERRI 0097 ET

ATLAS
GE-EPD

CHURCHILL SENSATION 028X (SOD)
CHURCHILL LADY 078X
GOLDEN OAK OUTCROSS 18U (SOD)
BR CSF BRIELLE 8052 ET
CHURCHILL SENSATION 028X (SOD)
BR GOLDRIEL 3029 ET
REMITALL ONLINE 122L (CHB,SOD)
DM BR TERRI 646 ET

Act. BW
77
Adj. WW
712
Adj. YW
1187
Adj. REA
13.2

CED	BW	WW	YW	SC	Milk	M+G	CEM	Uddr	Teat	Adj. IMF
+8.6	+0.2	+56	+82	+1.9	+35	+63	+4.6	+1.30	+1.30	2.76

Barber
RANCH

CW	Fat	REA	Marb	BMI\$	BIIS	CHBS
+69	+0.071	+58	+24	+380	+462	+125

SCHB

- Recommended for use on heifers.
- Calving-ease son of Belle Air with excellent maternal value, backed by some of the best cow families at Barber Ranch: 4082, 3029 and Terri 646. He is red to the ground with goggle eyes in an easy fleshing "beef bull" package.
- Ranks in the top 1% of the breed for SC; top 10% for CED, BW and Milk.



LOT 19

19
lot

BR BELLE AIR 1316

44300999 • DOB 9/23/21 • TAT. 1316 • Horned
{DLF,HYF,IEF,MSUDF}

BAR S LHF 028 240 (CHB)
BR BELLE AIR 6011 (CHB)
BR BELLE 4082 ET

CRR ABOUT TIME 743 (SOD)
BR ABIGAIL 6752 ET
BR ABIGAIL 8130 ET

ATLAS
GE-EPD

CHURCHILL SENSATION 028X (SOD)
CHURCHILL LADY 078X
GOLDEN OAK OUTCROSS 18U (SOD)
BR CSF BRIELLE 8052 ET
THM DURANGO 4037 (SOD)
CRR D03 CASSIE 206
DM BR SOONER (CHB)
BR GABRIELLE 5082

Act. BW
85
Adj. WW
730
Adj. YW
1285
Adj. REA
11.9

CED	BW	WW	YW	SC	Milk	M+G	CEM	Uddr	Teat	Adj. IMF
-3.3	+4.5	+76	+126	+2.6	+31	+68	-2.1	+1.30	+1.30	3.74

Barber
RANCH

CW	Fat	REA	Marb	BMI\$	BIIS	CHBS
+81	+0.001	+61	+39	+360	+467	+164

SCHB

- 1316 is a tremendous, performance-oriented son of Belle Air that has extra length and muscle shape. If you want to talk about cow power, he has it. His dam is a maternal sister to 124Y, Aventus, 3023 and 4075, all of which are out of Abigail 8130.
- Ranks in the top 1% of the breed for WW, YW and SC; top 3% for CHB; top 5% for M+G; top 10% for Marb.



BR ABIGAIL 8130 ET
Granddam of Lot 19

20
lot

BR BELLE AIR 1340

P44305511 • DOB 10/19/21 • TAT. 1340 • Scurred
{DLF,HYF,IEF,MSUDF}

BAR S LHF 028 240 (CHB)
BR BELLE AIR 6011 (CHB)
BR BELLE 4082 ET

BOYD WORLDWIDE 2114
BR MADELYNN 5144
BR SS MADELYNN 3A29

CHURCHILL SENSATION 028X (SOD)
CHURCHILL LADY 078X
GOLDEN OAK OUTCROSS 18U (SOD)
BR CSF BRIELLE 8052 ET
BOYD WORLDWIDE 9050 ET (SOD)
BOYD 4R HOLLY 0130
BR CSF COPPER ET (CHB)
BR MADELYNN 8017 ET

Act. BW
76
Adj. WW
652
Adj. YW
1137
Adj. REA
11.5

CED	BW	WW	YW	SC	Milk	M+G	CEM	Uddr	Teat	Adj. IMF
+5.5	+1.0	+59	+90	+1.7	+36	+65	+2.6	+1.30	+1.20	3.77



CW	Fat	REA	Marb	BMI\$	BIIS	CHBS
+76	+.081	+45	+.38	+385	+479	+150



- Recommended for use on heifers.
- Moderate, easy fleshing, powerfully constructed son of Belle Air that could be used on heifers.
- Ranks in the top 3% of the breed for SC; top 5% for Milk and CHB; top 10% for M+G and Marb.



LOT 20

21
lot

BR BELLE AIR 1341

P44305512 • DOB 10/22/21 • TAT. 1341 • Scurred
{DLF,HYF,IEF,MSUDF}

BAR S LHF 028 240 (CHB)
BR BELLE AIR 6011 (CHB)
BR BELLE 4082 ET

GERBER ANODYNE 001A (CHB)
CMF 70Z DOMINETTE 346E
CMF 11U DOMINETTE 70Z

CHURCHILL SENSATION 028X (SOD)
CHURCHILL LADY 078X
GOLDEN OAK OUTCROSS 18U (SOD)
BR CSF BRIELLE 8052 ET
KCF BENNETT 9126J R294 (SOD,CHB)
GERBER 627S HOLLY 096Y
MCF GVF JWR 215L DATELINE 041P
CMF 526J DOMINETTE 11U

Act. BW
74
Adj. WW
688
Adj. YW
1154
Adj. REA
11.8

CED	BW	WW	YW	SC	Milk	M+G	CEM	Uddr	Teat	Adj. IMF
+7.7	+0.3	+56	+89	+1.6	+35	+63	+4.4	+1.20	+1.20	3.92



CW	Fat	REA	Marb	BMI\$	BIIS	CHBS
+71	+.011	+57	+.42	+330	+419	+154



- Recommended for use on heifers.
- 1341 is a heavily pigmented, dark red bull that has tremendous depth of body. He is easy fleshing, big hipped, well balanced and structurally correct. His dam, sired by Anodyne, is a great producing young female with a beautiful udder.
- Ranks in the top 4% of the breed for SC and Marb; top 5% for CHB; top 10% for BW and Milk.



LOT 21

22
lot

BR BELLE AIR 1369

44320061 • DOB 12/15/21 • TAT. 1369 • Horned
{DLF,HYF,IEF,MSUDF}

BAR S LHF 028 240 (CHB)
BR BELLE AIR 6011 (CHB)
BR BELLE 4082 ET

BAR S LHF 028 240 (CHB)
BR VERA E011 ET
SHF X45 40W Y158

CHURCHILL SENSATION 028X (SOD)
CHURCHILL LADY 078X
GOLDEN OAK OUTCROSS 18U (SOD)
BR CSF BRIELLE 8052 ET
CHURCHILL SENSATION 028X (SOD)
CHURCHILL LADY 078X
BAR-H IDEAL 40W
SHF RIB EYE R117 T142

Act. BW
79
Adj. WW
705
Adj. YW
1268
Adj. REA
13.9

CED	BW	WW	YW	SC	Milk	M+G	CEM	Uddr	Teat	Adj. IMF
+4.4	+1.7	+61	+95	+2.1	+41	+71	+1.3	+1.30	+1.20	3.37



CW	Fat	REA	Marb	BMI\$	BIIS	CHBS
+72	+.091	+51	+.53	+370	+475	+162



- 1369 is a moderate birth bull with explosive growth that is chock full of maternal value and marbling. Short-marked, extra pigmented son of Belle Air that is stout made, well balanced and stylish.
- Ranks in the top 1% of the breed for SC and Milk; top 2% for M+G, Marb and CHB; top 4% for Marb.



LOT 22

sons of Belle Air



LOT 23

23 BR BELLE AIR 1355

44320048 • DOB 11/18/21 • TAT. 1355 • Horned
{DLF,HYF,IEF,MSUDF}

BAR S LHF 028 240 (CHB)
BR BELLE AIR 6011 (CHB)
BR BELLE 4082 ET

BR NITRO AVENTUS 3116 ET
BR KYLIE 6800 ET
BR MADELYNN 8017 ET

CHURCHILL SENSATION 028X (SOD)
CHURCHILL LADY 078X
GOLDEN OAK OUTCROSS 18U (SOD)
BR CSF BRIELLE 8052 ET
UPS TCC NITRO 1ET (SOD)
BR ABIGAIL 8130 ET
DM BR SOONER (CHB)
BR L1 DOMINETTE 6052

Act. BW 85
Adj. WW 620
Adj. YW 1421
Adj. REA 13.5

CED	BW	WW	YW	SC	Milk	M+G	CEM	Uddr	Teat	Adj. IMF
-1.0	+4.6	+70	+112	+1.8	+39	+74	+0.7	+1.30	+1.20	3.00

CW	Fat	REA	Marb	BMIS	BIIS	CHBS
+91	+0.021	+86	+31	+285	+377	+167

- 1355 is a high performing bull with excellent maternal traits. He is big topped and powerfully constructed from the ground up with added eye appeal and rib shape.
- Ranks in the top 1% of the breed for M+G and REA; top 2% for SC, Milk and CHB; top 3% for CW; top 4% for WW and YW.



LOT 24

24 BR BELLE AIR 1360

44320053 • DOB 11/20/21 • TAT. 1360 • Horned
{DLF,HYF,IEF,MSUDF}

BAR S LHF 028 240 (CHB)
BR BELLE AIR 6011 (CHB)
BR BELLE 4082 ET

CRR 719 CATAPULT 109 (SOD)
BR GABRIELLE 6731 ET
BR CSF GABRIELLE 8051 ET

CHURCHILL SENSATION 028X (SOD)
CHURCHILL LADY 078X
GOLDEN OAK OUTCROSS 18U (SOD)
BR CSF BRIELLE 8052 ET
TH 122 711 VICTOR 719T (SOD)
CRR 4037 ECLIPSE 808
DM BR SOONER (CHB)
BR GABRIELLE 5082

Act. BW 86
Adj. WW 621
Adj. YW 1132
Adj. REA 13.3

CED	BW	WW	YW	SC	Milk	M+G	CEM	Uddr	Teat	Adj. IMF
-3.3	+4.5	+67	+107	+1.7	+33	+67	-2.0	+1.20	+1.20	3.23

CW	Fat	REA	Marb	BMIS	BIIS	CHBS
+78	+0.041	+64	+29	+293	+384	+145

- 1360 is a short-marked, powerfully designed, easy-fleshing and structurally correct son of Belle Air that is out of a daughter of Gabrielle 8051, who was one of the most consistent producing cows on the ranch and sold as a feature lot in the 2018 cow sale.
- Ranks in the top 3% of the breed for SC; top 10% for WW, YW, M+G and CHB.

25 BR BELLE AIR 1361

P44320054 • DOB 11/23/21 • TAT. 1361 • Polled
{DLF,HYF,IEF,MSUDF}

BAR S LHF 028 240 (CHB)
BR BELLE AIR 6011 (CHB)
BR BELLE 4082 ET

UPS SENSATION 2296 ET
BR GABRIELLE E057 ET
BR GABRIELLE 9011ET

CHURCHILL SENSATION 028X (SOD)
CHURCHILL LADY 078X
GOLDEN OAK OUTCROSS 18U (SOD)
BR CSF BRIELLE 8052 ET
CHURCHILL SENSATION 028X (SOD)
UPS JT MISS NEON 7811 1ET
BR DM CSF WALLACE ET
BR GABRIELLE 5082

Act. BW 75
Adj. WW 532
Adj. YW 1158
Adj. REA 12.5

CED	BW	WW	YW	SC	Milk	M+G	CEM	Uddr	Teat	Adj. IMF
+13.1	-0.1	+49	+81	+1.7	+30	+54	+8.6	+1.40	+1.50	3.45

CW	Fat	REA	Marb	BMIS	BIIS	CHBS
+71	+0.061	+65	+50	+414	+506	+159

- Recommended for use on heifers.
- 1361's dam is a 2296 daughter that traces back to 5082 and is proving herself as a consistent producer. 1361 is a calving-ease bull with extra marbling that is stylish and sound structured.
- Ranks in the top 2% of the breed for Teat; top 3% for CED, Marb and CHB; top 5% for SC and Udder; top 10% for BW.

26 BR BELLE AIR 1364

P44320057 • DOB 11/29/21 • TAT. 1364 • Polled
{DLF,HYF,IEF,MSUDF}

BAR S LHF 028 240 (CHB)
BR BELLE AIR 6011 (CHB)
BR BELLE 4082 ET

DM BR SOONER (CHB)
BR GOLDRIEL 6644 ET
BR GOLDRIEL 3029 ET

CHURCHILL SENSATION 028X (SOD)
CHURCHILL LADY 078X
GOLDEN OAK OUTCROSS 18U (SOD)
BR CSF BRIELLE 8052 ET
REMITALL ONLINE 122L (CHB,SOD)
DM L1 DOMINETTE 901
C-S PURE GOLD 98170 (SOD)
MSU BR MS KEYNOTE 62H

Act. BW 82
Adj. WW 564
Adj. YW 1033
Adj. REA 13.3

CED	BW	WW	YW	SC	Milk	M+G	CEM	Uddr	Teat	Adj. IMF
+3.8	+1.9	+54	+92	+2.0	+20	+47	-0.2	+1.30	+1.20	2.86

CW	Fat	REA	Marb	BMIS	BIIS	CHBS
+72	+0.011	+65	+40	+309	+393	+154

- Good birth weight to yearling weight EPD spread on this son of Belle Air whose dam is a maternal sister to Gabrielle 5082.
- Ranks in the top 1% of the breed for SC; top 5% for Marb and top 10% for CHB.

sons of Belle Air E133



LOT 27



LOT 28






BR BELLE AIR E133 ET
Sire of Lots 27-33

27
6/7

BR E133 BELLE AIR 1324

P44301005 • DOB 9/30/21 • TAT. 1324 • Polled
{DLF,HYF,IEF,MSUDF}




BR BELLE AIR 6011 (CHB)					BAR S LHF 028 240 (CHB)					Act. BW	
BR BELLE AIR E133 ET					BR BELLE 4082 ET					85	
BR ABIGAIL 8130 ET					DM BR SOONER (CHB)					Adj. WW	
					BR GABRIELLE 5082					778	
EFBEEF TFL U208 TESTED X651 ET (CHB,SOD)					EFBEEF FOREMOST U208 (SOD,CHB)					Adj. YW	
/S LADY TESTED 5412C ET					EFBEEF P606 MABEL R415					1366	
JET MS Y368 (DOD)					JET DOMINO L617 (SOD,CHB)					Adj. REA	
					JET MS A104 (DOD)					12.2	
											
CED	BW	WW	YW	SC	Milk	M+G	CEM	Uddr	Teat	Adj. IMF	
+1.2	+3.7	+79	+127	+1.6	+32	+71	+0.4	+1.20	+1.20	3.91	
					CW	Fat	REA	Marb	BMIS	BIIS	CHBS
					+73	+0.11	+51	+36	+296	+404	+131
											

- 1324 is an easy-fleshing, powerfully constructed son of E133 that excels at performance. This herd bull prospect is well balanced with tons of volume and rib shape with extra look.
- Lots 27-33 are paternal brothers to Lot 1, Winchester. BR Belle Air E133 ET was the 2019 AHA Horned Show Bull of the Year.
- Ranks in the top 1% of the breed for WW and YW; top 2% for M+G; top 4% for SC and top 10% for Marb.

28
6/7

BR E133 BELLE AIR 1329

44305501 • DOB 10/3/21 • TAT. 1329 • Horned
{DLF,HYF,IEF,MSUDF}

BR BELLE AIR 6011 (CHB)					BAR S LHF 028 240 (CHB)					Act. BW		
BR BELLE AIR E133 ET					BR BELLE 4082 ET					84		
BR ABIGAIL 8130 ET					DM BR SOONER (CHB)					Adj. WW		
					BR GABRIELLE 5082					679		
CHURCHILL SENSATION 028X (SOD)					UPS DOMINO 3027 (CHB,SOD)					Adj. YW		
BR GYPSY ROSE 4019 ET					CHURCHILL LADY 7202T ET					1145		
BR GOLDRIEL 3029 ET					C-S PURE GOLD 98170 (SOD)					Adj. REA		
					MSU BR MS KEYNOTE 62H					11.4		
CED	BW	WW	YW	SC	Milk	M+G	CEM	Uddr	Teat	Adj. IMF		
+9.1	+1.2	+63	+98	+1.2	+34	+65	+4.6	+1.30	+1.40	4.30		
					CW	Fat	REA	Marb	BMIS	BIIS	CHBS	
					+68	+0.041	+43	+31	+355	+449	+126	

- Recommended for use on heifers.
- Big spread, calving-ease son of E133 that is long hipped, big bodied, smooth shouldered and extended in his front 1/3. His dam has been a consistent producer for years and is the dam of 6017, who was the feature two-year-old spring-calving female in the 2018 cow sale and now works in the GKB herd.
- Ranks in the top 10% for CED, M+G, Teat and Marb.

sons of Belle Air E133



LOT 29



LOT 30

29
67

GKB E133 BELLE AIR 1649

44309967 • DOB 9/29/21 • TAT. 1649 • Horned
{DLF,HYF,IEF,MSUDF,MDF}

BR BELLE AIR 6011 (CHB)
BR BELLE AIR E133 ET
BR ABIGAIL 8130 ET

ATLAS 66T MR HELTON 150Y ET
BR JO ANNA 5087
BR DM JENNA 7078 ET

BAR S LHF 028 240 (CHB)
BR BELLE 4082 ET
DM BR SOONER (CHB)
BR GABRIELLE 5082
CRR HELTON 980 (SOD)
JJD VICTORIA 66T ET
DM BR SOONER (CHB)
DM L1 DOMINETTE 340

Act. BW
95
Adj. WW
791
Adj. YW
1082
Adj. REA
9.8

CED	BW	WW	YW	SC	Milk	M+G	CEM	Uddr	Teat	Adj. IMF
-5.9	+5.8	+70	+114	+0.7	+27	+62	-7.8	+1.30	+1.20	3.51

GKB	CW	Fat	REA	Marb	BMIS	BIIS	CHBS	CHB
	+82	+0.11	+63	+24	+330	+422	+141	

- 1649 is a stout made, easy fleshing, structurally correct son of E133 that excels at performance. If there was an EPD for Phenotype, he would be in the top 1%. Big growth bull with pigment and style to burn.
- Ranks in the top 3% of the breed for WW and YW.

30
67

GKB E133 BELLE AIR 1651

44309968 • DOB 9/30/21 • TAT. 1651 • Horned
{DLF,HYF,IEF,MSUDF,MDF}

BR BELLE AIR 6011 (CHB)
BR BELLE AIR E133 ET
BR ABIGAIL 8130 ET

BR BOLD GOLD 4012 ET
BR MIA 6077
BR MIA 7007 ET

BAR S LHF 028 240 (CHB)
BR BELLE 4082 ET
DM BR SOONER (CHB)
BR GABRIELLE 5082
CHURCHILL SENSATION 028X (SOD)
BR GOLDRIEL 3029 ET
BR LANSING 3060
BR L1 DOMINETTE 5044 (DOD)

Act. BW
89
Adj. WW
728
Adj. YW
1230
Adj. REA
12.2

CED	BW	WW	YW	SC	Milk	M+G	CEM	Uddr	Teat	Adj. IMF
-0.7	+4.8	+73	+120	+1.8	+36	+73	-1.3	+1.20	+1.10	3.74

GKB	CW	Fat	REA	Marb	BMIS	BIIS	CHBS	CHB
	+88	+0.51	+56	+46	+348	+459	+162	

- Well built, powerfully designed and big bodied, 1651 has the look of a big-time herd bull. He excels at growth, maternal traits and carcass.
- Ranks in the top 1% of the breed for M+G; top 2% for WW, YW, SC and CHB; top 3% for CW and Marb; top 5% for Milk.

sons of Belle Air E133

31
lot

GKB E133 BELLE AIR 1654

44309970 • DOB 10/5/21 • TAT. 1654 • Horned
{DLF,HYF,IEF,MSUDF,MDF}

BR BELLE AIR 6011 (CHB)
BR BELLE AIR E133 ET
BR ABIGAIL 8130 ET

NJW 73S 980 HUTTON 1092 ET
BR BRIELLE 4429
BR DM BRIELLE 8024 ET

BAR S LHF 028 240 (CHB)
BR BELLE 4082 ET
DM BR SOONER (CHB)
BR GABRIELLE 5082
CRR HELTON 980 (SOD)
NJW P606 72N DAYDREAM 73S
BR MOLER ET
DM L1 DOMINETTE 901

Act. BW
108
Adj. WW
794
Adj. YW
1319
Adj. REA
12.6

CED	BW	WW	YW	SC	Milk	M+G	CEM	Uddr	Teat	Adj. IMF
+2.3	+5.4	+76	+122	+0.8	+28	+66	+1.4	+1.20	+1.20	4.11

CW	Fat	REA	Marb	BMIS	BIIS	CHBS	CHB
+92	-.009	+83	+32	+329	+429	+160	

- 1654 possesses sensational growth and carcass traits and is backed by powerful cow families. He has exceptional volume, mass and stoutness and is ready to get to work.
- Ranks in the top 1% of the breed for WW and YW; top 2% for CW and REA; top 4% for CHB; top 10% for M+G and Marb.



LOT 31

32
lot

BR E133 BELLE AIR 1336

44305508 • DOB 10/14/21 • TAT. 1336 • Horned
{DLF,HYF,IEF,MSUDF}

BR BELLE AIR 6011 (CHB)
BR BELLE AIR E133 ET
BR ABIGAIL 8130 ET

NJW 73S 980 HUTTON 1092 ET
BR JUNE GABRIELLE 521C ET
BR GABRIELLE 5082

BAR S LHF 028 240 (CHB)
BR BELLE 4082 ET
DM BR SOONER (CHB)
BR GABRIELLE 5082
CRR HELTON 980 (SOD)
NJW P606 72N DAYDREAM 73S
BR LANSING 3060
BR GOLDRIEL 3029 ET

Act. BW
92
Adj. WW
659
Adj. YW
1255
Adj. REA
13.6

CED	BW	WW	YW	SC	Milk	M+G	CEM	Uddr	Teat	Adj. IMF
+3.3	+5.8	+77	+132	+0.6	+32	+71	+1.7	+1.10	+1.00	3.68

CW	Fat	REA	Marb	BMIS	BIIS	CHBS	CHB
+89	-.039	+79	+26	+317	+414	+158	

- 1336's mother is a Hutton daughter out of the famed Gabrielle 5082; 521C now resides at GKB. This E133 son is powerfully built with good body shape and big footed. He will add pay weight to your calf crop.
- Ranks in the top 1% of the breed for WW and YW; top 2% for M+G and REA; top 3% for CW and CHB.



LOT 32

33
lot

BR E133 BELLE AIR 1359

P44320052 • DOB 11/19/21 • TAT. 1359 • Polled
{DLF,HYF,IEF,MSUDF}

BR BELLE AIR 6011 (CHB)
BR BELLE AIR E133 ET
BR ABIGAIL 8130 ET

H/TSR/CHEZ/FULL THROTTLE ET
BR KHALESSI 6620 ET
BR GABRIELLE 5082

BAR S LHF 028 240 (CHB)
BR BELLE 4082 ET
DM BR SOONER (CHB)
BR GABRIELLE 5082
H WCC/WB 668 WYARNO 9500 ET (SOD)
R SWEET RED WINE 039
BR LANSING 3060
BR GOLDRIEL 3029 ET

Act. BW
85
Adj. WW
563
Adj. YW
1173
Adj. REA
12.9

CED	BW	WW	YW	SC	Milk	M+G	CEM	Uddr	Teat	Adj. IMF
+2.7	+4.0	+74	+120	+0.9	+22	+59	+0.8	+1.20	+1.20	2.77

CW	Fat	REA	Marb	BMIS	BIIS	CHBS	CHB
+84	-.009	+67	+21	+298	+389	+141	

- 1359 has extra length and a square hip with plenty of muscle shape. He is short marked with exceptional eye appeal. Big growth bull with legendary cow families in his pedigree, including 4082, 8130 and 5082.
- Ranks in the top 2% of the breed for WW and YW; top 10% for CW and REA.



LOT 33



LOT 34

34
lot

GKB 8123 BELLE AIR 1968

44305639 • DOB 11/9/21 • TAT. 1968 • Horned
{DLF,HYF,IEF,MSUDF,MDF}

BR BELLE AIR 6011 (CHB)
BR BELLE AIR 8123
BR BRYANNA 6803 ET

BAR S LHF 028 240 (CHB)
GKB 240 BREEZE 322B 8628
GKB 88X BREEZE B175 322B



BAR S LHF 028 240 (CHB)
BR BELLE 4082 ET
BR COPPER 124Y (CHB)
BR DM BRYANNA 8021 ET
CHURCHILL SENSATION 028X (SOD)
CHURCHILL LADY 078X
N.JW 98S R117 RIBEYE 88X ET (SOD,CHB)
GKB TMH NEW ERA BREEZE B175 ET

Act. BW
65
Adj. WW
579
Adj. YW
1134
Adj. REA
12.5

CED	BW	WW	YW	SC	Milk	M+G	CEM	Uddr	Teat	Adj. IMF
+17.0	-1.8	+43	+67	+1.1	+26	+48	+9.6	+1.40	+1.40	3.04



CW	Fat	REA	Marb	BMI\$	BIIS	CHBS
+49	+.041	+1.8	+.24	+377	+449	+105

- Recommended for use on heifers.
- 1968 is the highest calving-ease bull in the offering but doesn't sacrifice any quality. He has phenomenal phenotype with loads of rib shape and depth of body. His dam is a daughter of "240" out of a Breeze female that has been one of the top cow families in the GKB program for years.
- Ranks in the top 1% of the breed for CED; top 2% for BW; top 5% for Udder; top 10% for Teat.



LOT 35

35
lot

GKB 8123 BELLE AIR 1979

44309181 • DOB 12/5/21 • TAT. 1979 • Horned
{DLF,HYF,IEF,MSUDF,MDF}

BR BELLE AIR 6011 (CHB)
BR BELLE AIR 8123
BR BRYANNA 6803 ET

GKB 2155 1105 CURRENCY 205C
GKB 205C TAILOR MADE 211C 8682
GKB 2155 TAILOR MADE B018 211C



BAR S LHF 028 240 (CHB)
BR BELLE 4082 ET
BR COPPER 124Y (CHB)
BR DM BRYANNA 8021 ET
BR CURRENCY 2155 ET
MM BRIELLE 1105 ET
BR CURRENCY 2155 ET
GKB TMH RAM TAILOR MADE B018 ET

Act. BW
77
Adj. WW
590
Adj. YW
1247
Adj. REA
13.2

CED	BW	WW	YW	SC	Milk	M+G	CEM	Uddr	Teat	Adj. IMF
+8.6	+2.4	+65	+104	+1.3	+33	+66	+3.7	+1.40	+1.40	2.87



CW	Fat	REA	Marb	BMI\$	BIIS	CHBS
+75	+.001	+6.0	+.12	+299	+376	+130



- Recommended for use on heifers.
- 1979 is a big spread calving-ease son of 8123 that has excellent maternal traits. He is a well-built bull with superior rib shape and phenotype in a structurally correct design.
- Ranks in the top 5% of the breed for Udder; top 10% for CED, M+G and Teat.



LOT 36

36
lot

GKB 8123 BELLE AIR 1837

44305625 • DOB 10/16/21 • TAT. 1837 • Horned
{DLF,HYF,IEF,MSUDF,MDF}

BR BELLE AIR 6011 (CHB)
BR BELLE AIR 8123
BR BRYANNA 6803 ET

GKB 9279 EXTRA DEEP 195C ET
GKB 77B 195C LADY BOB 8623
GKB 9279 LADY BOB 77B



BAR S LHF 028 240 (CHB)
BR BELLE 4082 ET
BR COPPER 124Y (CHB)
BR DM BRYANNA 8021 ET
ECR L18 EXTRA DEEP 9279 (SOD,CHB)
C 88X NOTICE ME 2067 ET
ECR L18 EXTRA DEEP 9279 (SOD,CHB)
C R111 LADY ERA 1178 ET

Act. BW
95
Adj. WW
543
Adj. YW
1086
Adj. REA
12.2

CED	BW	WW	YW	SC	Milk	M+G	CEM	Uddr	Teat	Adj. IMF
+5.4	+4.7	+65	+100	+1.6	+29	+61	+1.2	+1.30	+1.30	3.57



CW	Fat	REA	Marb	BMI\$	BIIS	CHBS
+77	+.001	+.76	+.19	+399	+484	+144



- 1837 is a square made, big topped and well balanced son of 8123 that has good growth traits.
- Ranks in the top 4% of the breed for SC and REA; top 10% for CHB.

sons of Belle Air 8123

37
lot

GKB 8123 BELLE AIR 1957

44305635 • DOB 10/30/21 • TAT. 1957 • Horned
{DLF,HYF,IEF,MSUDF,MDF}

BR BELLE AIR 6011 (CHB)
BR BELLE AIR 8123
BR BRYANNA 6803 ET

GKB 88X BRYSON 37B ET
GKB 3021 37B LADY TRUST 8587
C LADY TRUST 3021

BAR S LHF 028 240 (CHB)
BR BELLE 4082 ET
BR COPPER 124Y (CHB)
BR DM BRYANNA 8021 ET
N.JW 98S R117 RIBEYE 88X ET (SOD,CHB)
C R111 LADY ERA 1178 ET
N.JW 73S M326 TRUST 100W ET (SOD,CHB)
C LADY DOMINO 0047 (DOD)

Act. BW
83
Adj. WW
639
Adj. YW
1143
Adj. REA
13.2

CED	BW	WW	YW	SC	Milk	M+G	CEM	Uddr	Teat	Adj. IMF
+9.9	+1.5	+60	+86	+1.1	+29	+59	+5.1	+1.40	+1.50	3.68

CW	Fat	REA	Marb	BMIS	BIIS	CHBS
+81	+0.051	+0.79	+0.36	+425	+518	+152



- Recommended for use on heifers.
- Calving-ease son of 8123 that has excellent carcass and \$indexes. His maternal grand-dam, C Lady Trust 3021, was a feature bred heifer in a past Colyer sale.
- Ranks in the top 3% of the breed for REA; top 5% for Udder and CHB; top 10% for CED, Teat, BMI and BI.



LOT 38

39
lot

GKB 8123 BELLE AIR 1969

44305640 • DOB 11/10/21 • TAT. 1969 • Horned
{DLF,HYF,IEF,MSUDF,MDF}

BR BELLE AIR 6011 (CHB)
BR BELLE AIR 8123
BR BRYANNA 6803 ET

BR CSF COPPER ET (CHB)
HAPP FINER POINTS 1824 ET
CRANE STYLE POINTS 945

BAR S LHF 028 240 (CHB)
BR BELLE 4082 ET
BR COPPER 124Y (CHB)
BR DM BRYANNA 8021 ET
DM BR SOONER (CHB)
BR GABRIELLE 5082
CH 372 POT OF GOLD 7120 ET
CH MISS DIAL 6311

Act. BW
89
Adj. WW
546
Adj. YW
1109
Adj. REA
12.1

CED	BW	WW	YW	SC	Milk	M+G	CEM	Uddr	Teat	Adj. IMF
+9.8	+2.4	+60	+95	+1.0	+23	+53	+3.1	+1.50	+1.60	2.83

CW	Fat	REA	Marb	BMIS	BIIS	CHBS
+64	+0.011	+0.51	+0.33	+327	+415	+135



- Big spread calving-ease bull that is backed by a tremendous daughter of the now-deceased immortal donor dam Style Points 945. The dam, 1824, is a maternal sister to Happ Kool Aid Points 1218, the former National Champion Female and elite donor in the Buck Cattle Co. program.
- Ranks in the top 1% of the breed for Udder and Teat; top 10% for CED and Marb.



LOT 40

38
lot

GKB 8123 BELLE AIR 1955

44305634 • DOB 10/27/21 • TAT. 1955 • Horned
{DLF,HYF,IEF,MSUDF,MDF}

BR BELLE AIR 6011 (CHB)
BR BELLE AIR 8123
BR BRYANNA 6803 ET

JCS GKB 240 CLAYTON 6034
GKB 6034 SWEET THING 130C 8652
GKB 120Y SWEET THING 130C ET

BAR S LHF 028 240 (CHB)
BR BELLE 4082 ET
BR COPPER 124Y (CHB)
BR DM BRYANNA 8021 ET
BAR S LHF 028 240 (CHB)
JCS 5216 DOMINETTE 3511
BR COPPER 120Y
BF 144U SWEET THING 2103 ET

Act. BW
88
Adj. WW
610
Adj. YW
1099
Adj. REA
12.7

CED	BW	WW	YW	SC	Milk	M+G	CEM	Uddr	Teat	Adj. IMF
+5.9	+2.5	+58	+89	+1.4	+29	+58	+2.9	+1.50	+1.60	3.35

CW	Fat	REA	Marb	BMIS	BIIS	CHBS
+67	+0.071	+0.45	+0.42	+399	+495	+144



- 1955 is a stout made, balanced trait bull with extra marbling.
- Ranks in the top 1% of the breed for Udder and Teat; top 4% for Marb; top 10% for CHB.

40
lot

GKB 8123 BELLE AIR 1974

44305642 • DOB 11/15/21 • TAT. 1974 • Horned
{DLF,HYF,IEF,MSUDF,MDF}

BR BELLE AIR 6011 (CHB)
BR BELLE AIR 8123
BR BRYANNA 6803 ET

C SPECIAL EDITION 6105 ET (CHB)
GKB 6105 NOTICEMET00 B059 8610
GKB 860 NOTICE ME TOO B059 ET

BAR S LHF 028 240 (CHB)
BR BELLE 4082 ET
BR COPPER 124Y (CHB)
BR DM BRYANNA 8021 ET
CRR 5280
C 88X NOTICE ME 1311 ET
CL 1 DOMINO 860U (SOD)
C NOTICE ME TOO ET

Act. BW
114
Adj. WW
715
Adj. YW
1303
Adj. REA
13.4

CED	BW	WW	YW	SC	Milk	M+G	CEM	Uddr	Teat	Adj. IMF
-3.9	+7.7	+77	+124	+1.3	+33	+72	-2.4	+1.30	+1.30	2.95

CW	Fat	REA	Marb	BMIS	BIIS	CHBS
+79	+0.011	+0.75	+0.24	+338	+436	+142



- 1974 is a high performing son of 8123 that is stout made, rugged built and sound. His dam is an excellent Special Edition daughter whose cow family traces back to the famous C Notice Me Too.
- Ranks in the top 1% of the breed for WW and YW; top 2% for M+G; top 4% for REA.

sons of Rare Air



LOT 41



BR ANASTASIA 3023 ET

Maternal granddam of Lots 42 & 45



LOT 42

41 GKB RARE AIR 1320

P44372570 • DOB 9/26/21 • TAT. 1320 • Scurred
{DLF,HYF,IEF,MSUDF,MDF}

BR BELLE AIR 6011 (CHB)
BR RARE AIR ET
BR CSF GABRIELLE 8051 ET

CRR 109 ON POINT 559 ET
GKB BR HOLLY G025 ET
BR 124Y ALAINNA 4138

BAR S LHF 028 240 (CHB)
BR BELLE 4082 ET
DM BR SOONER (CHB)
BR GABRIELLE 5082
CRR 719 CATAPULT 109 (SOD)
CRR 435 KELLY 161
BR COPPER 124Y (CHB)
BR 74 ALAINNA 3150

CED	BW	WW	YW	SC	Milk	M+G	CEM	Uddr	Teat	Adj. IMF
+5.8	+2.2	+59	+101	+0.7	+31	+61	+2.5	+1.20	+1.30	3.14

CW	Fat	REA	Marb	BMIS	BIIS	CHBS
+78	+0.021	+50	+14	+361	+438	+138



• 1320 is an absolute stud. He is big hipped, stout from end to end, big bodied, jet necked and ultra-sound in his structure. Study his EPD profile, and you recognize that he has no extremes but offers a lot of well-balanced numbers that rank in the top 25% or higher. He is out of a first-calf heifer by On Point whose dam is one of our exciting young donor cows, Alainna 4138. If you are looking for a do-it-all sire that has a great look and pedigree stacked with great cow families, then this son of Rare Air is for you.

42 BR RARE AIR 1319

P44301002 • DOB 9/26/21 • TAT. 1319 • Polled
{DLF,HYF,IEF,MSUDF}

BR BELLE AIR 6011 (CHB)
BR RARE AIR ET
BR CSF GABRIELLE 8051 ET

CRR 719 CATAPULT 109 (SOD)
BR ANASTASIA G012 ET
BR ANASTASIA 3023 ET

BAR S LHF 028 240 (CHB)
BR BELLE 4082 ET
DM BR SOONER (CHB)
BR GABRIELLE 5082
TH 122 711 VICTOR 719T (SOD)
CRR 4037 ECLIPSE 808
UPS TCC NITRO 1ET (SOD)
BR ABIGAIL 8130 ET

CED	BW	WW	YW	SC	Milk	M+G	CEM	Uddr	Teat	Adj. IMF
+6.6	+1.3	+57	+87	+1.0	+26	+54	+2.1	+1.20	+1.30	3.42

CW	Fat	REA	Marb	BMIS	BIIS	CHBS
+69	+0.031	+60	+10	+335	+405	+118



• Recommended for use on heifers.
• 1319 is an exciting son of Rare Air that is dark red, short marked and has that herd bull look. He is an easy-fleshing, sound structured individual that is loaded with red meat and muscle. 1319 is blessed with an abundance of rib shape and depth of flank with big feet. He is out of a phenomenal first-calf heifer sired by Catapult and backed by the great Anastasia 3023.

43
lot

BR RARE AIR 1294

44300984 • DOB 9/4/21 • TAT. 1294 • Horned
{DLF,HYF,IEF,MSUDF}

BR BELLE AIR 6011 (CHB)
BR RARE AIR ET
BR CSF GABRIELLE 8051 ET

BR HUTTON 4030ET
BR BAILEE JO G017 ET
BR BAILEE 1066 ET

BAR S LHF 028 240 (CHB)
BR BELLE 4082 ET
DM BR SOONER (CHB)
BR GABRIELLE 5082
NJW 73S 980 HUTTON 109Z ET
BR CSF BRIELLE 8052 ET
DM BR SOONER (CHB)
BR GABRIELLE 5082

Act. BW
84
Adj. WW
713
Adj. YW
1253
Adj. REA
12.5

CED	BW	WW	YW	SC	Milk	M+G	CEM	Uddr	Teat	Adj. IMF
+9.3	+2.3	+57	+90	+0.6	+25	+53	+5.8	+1.20	+1.30	3.21



CW	Fat	REA	Marb	BMIS	BIIS	CHBS
+65	+.021	+58	+13	+320	+393	+112

- 1294 is a long-made son of Rare Air that is well built with short markings plus shape and style. We used Rare Air on a lot of first-calf heifers because of his excellent calving ease, phenotype and superior pedigree, and we think you will like the results. 1294's mother is a Hutton out of a Sooner x Gabrielle 5082 female that is a full sister to many great females.

- Ranks in the top 10% of the breed for CED.



LOT 43

44
lot

BR RARE AIR 1339

P44413961 • DOB 10/19/21 • TAT. 1339 • Polled

BR BELLE AIR 6011 (CHB)
BR RARE AIR ET
BR CSF GABRIELLE 8051 ET

UPS SENSATION 2296 ET
BR AMY LYNN G038 ET
BR AMY RIELLE 5538 ET

BAR S LHF 028 240 (CHB)
BR BELLE 4082 ET
DM BR SOONER (CHB)
BR GABRIELLE 5082
CHURCHILL SENSATION 028X (SOD)
UPS JT MISS NEON 7811 1ET
DM BR SOONER (CHB)
BR GABRIELLE 5082

Act. BW
77
Adj. WW
743
Adj. YW
1223
Adj. REA
12.4

CED	BW	WW	YW	SC	Milk	M+G	CEM	Uddr	Teat	Adj. IMF
+6.2	+1.1	+56	+92	+1.0	+30	+58	+3.2	+1.30	+1.40	3.27



CW	Fat	REA	Marb	BMIS	BIIS	CHBS
+77	+.071	+56	+21	+391	+472	+133

- This bull will be sure to impress you just as much in person as he does in his picture. Stout in his design with tons of rib shape, muscle and bone, he is structurally correct and sound while being short marked with added pigment. He has a moderate birth weight EPD yet still possesses good growth with a well-balanced numerical profile.

- 1339's mother is an exciting first-calf heifer sired by 2296 and out of Amy Rielle 5538.



LOT 44

45
lot

BR RARE AIR 1353

P44320046 • DOB 11/11/21 • TAT. 1353 • Polled
{DLF,HYF,IEF,MSUDF}

BR BELLE AIR 6011 (CHB)
BR RARE AIR ET
BR CSF GABRIELLE 8051 ET

UPS SENSATION 2296 ET
BR ANASTASIA G014 ET
BR ANASTASIA 3023 ET

BAR S LHF 028 240 (CHB)
BR BELLE 4082 ET
DM BR SOONER (CHB)
BR GABRIELLE 5082
CHURCHILL SENSATION 028X (SOD)
UPS JT MISS NEON 7811 1ET
UPS TCC NITRO 1ET (SOD)
BR ABIGAIL 8130 ET

Act. BW
83
Adj. WW
599
Adj. YW
1276
Adj. REA
12.7

CED	BW	WW	YW	SC	Milk	M+G	CEM	Uddr	Teat	Adj. IMF
+2.9	+1.9	+61	+98	+1.0	+31	+61	+1.5	+1.20	+1.30	3.33



CW	Fat	REA	Marb	BMIS	BIIS	CHBS
+67	+.041	+53	+19	+353	+435	+121

- 1353 is a moderate birth and exceptional growth son of Rare Air. His dam is a tremendous 2296 daughter whose dam is the immortal donor Anastasia 3023.



BR RARE AIR ET
Sire of Lots 41-45

sons of Sensation G015



LOT 46



BR GKB SENSATION G015 ET
Sire of Lots 46 & 47



LOT 47

46
Gt

BR G015 SENSATION 1322

P44301003 • DOB 9/29/21 • TAT. 1322 • Scurred
{DLF,HYF,IEF,MSUDF}

UPS SENSATION 2296 ET
BR GKB SENSATION G015 ET
BR ANASTASIA 3023 ET

LJS MARK DOMINO 1321 {CHB}
LOEWEN MISS 1321 F19 ET
/S LADY ON TARGET 5002C ET

CHURCHILL SENSATION 028X {SOD}
UPS JT MISS NEON 7811 1ET
UPS TCC NITRO 1ET {SOD}
BR ABIGAIL 8130 ET
LJS MARK DOMINO 0945 {CHB}
LJS MS MARK DOMINO 1125
HYALITE ON TARGET 936 {SOD}
/S LADY DOMINO 9144W

Act. BW
84

Adj. WW

Adj. YW

1230

Adj. REA

12.9

Adj. IMF

3.08



CED	BW	WW	YW	SC	Milk	M+G	CEM	Uddr	Teat	Adj. IMF
+1.2	+4.0	+57	+100	+1.7	+25	+54	+1.9	+1.30	+1.30	3.08

- 1322 is a short-marked, dark red son of BR GKB Sensation G015 ET that is one impressive beef bull. His combination of muscle shape, body type and overall design is striking.
- Ranks in the top 3% of the breed for SC.

47
Gt

GKB G015 SENSATION 1648

44309966 • DOB 9/28/21 • TAT. 1648 • Horned
{DLF,HYF,IEF,MSUDF,MDF}

UPS SENSATION 2296 ET
BR GKB SENSATION G015 ET
BR ANASTASIA 3023 ET

BR BELLE AIR 6011 {CHB}
BR TINKER BELLE E131 ET
BR MS SOONER 7172

CHURCHILL SENSATION 028X {SOD}
UPS JT MISS NEON 7811 1ET
UPS TCC NITRO 1ET {SOD}
BR ABIGAIL 8130 ET
BAR S LHF 028 240 {CHB}
BR BELLE 4082 ET
DM BR SOONER {CHB}
BR DOMINETTE 0013

Act. BW

80

Adj. WW

671

Adj. YW

1149

Adj. REA

12.6

Adj. IMF

3.33



CED	BW	WW	YW	SC	Milk	M+G	CEM	Uddr	Teat	Adj. IMF
+11.2	0.0	+55	+93	+1.4	+38	+65	+4.2	+1.40	+1.60	3.33

- Recommended for use on heifers.
- 1648 is a long made, stout featured, sound structured calving-ease son of Sensation G015 ET. He has superb maternal traits with added carcass and \$Indexes. He will leave an excellent, productive set of daughters that will last a lifetime.
- Ranks in the top 1% of the breed for Teat; top 2% for CHB; top 4% for CED, Milk, Marb, BMI and BI; top 5% for BW and Udder; top 10% for M+G and CW.

48
67

GKB BELTON 1838

44305626 • DOB 10/16/21 • TAT. 1838 • Horned
{DLF,HYF,IEF,MSUDF,MDF}

NJW 98S R117 RIBEYE 88X ET (SOD,CHB)
GKB PRCC 88X BELTON 213 ET
GKB EJE B627 BREEZE B929 ET

BR BELLE AIR 6011 (CHB)
BR AUDREY 8045
BR AUDREY 6030

SHF RIB EYE M326 R117 (CHB,SOD)
NJW 9126J DEW DOMINO 98S (DOD)
GKB DOWNTOWN B627 ET
GKB 146 BREEZE B533
BAR S LHF 028 240 (CHB)
BR BELLE 4082 ET
BOYD WORLDWIDE 2114
BR AUDREY 4075 ET

Act. BW
99
Adj. WW
456
Adj. YW
1081
Adj. REA
10.9

CED	BW	WW	YW	SC	Milk	M+G	CEM	Uddr	Teat	Adj. IMF
+2.5	+3.1	+53	+85	+0.8	+35	+62	+0.1	+1.20	+1.30	4.19

CW	Fat	REA	Marb	BMI\$	BIIS	CHBS
+49	-.009	+44	+46	+386	+479	+136

- 1838 is a striking son of Belton 213 ET that is stout in his design with excellent rib shape and center capacity in a structurally correct package. His mother is an exquisite Belle Air daughter that is out of Audrey 6030, a feature high selling female in the 2018 Barber Ranch Cow Sale.

- Ranks in the top 3% of the breed for Marb and top 5% for Milk.



LOT 48

49
67

GKB BELTON 1818

44367573 • DOB 10/8/21 • TAT. 1818 • Horned
{DLF,HYF,IEF,MSUDF,MDF}

NJW 98S R117 RIBEYE 88X ET (SOD,CHB)
GKB PRCC 88X BELTON 213 ET
GKB EJE B627 BREEZE B929 ET

/S JBB/AL BOOM TOWN 44608 (CHB)
GKB 44608 ON TARGET 8672
/S LADY ON TARGET 45088 ET

SHF RIB EYE M326 R117 (CHB,SOD)
NJW 9126J DEW DOMINO 98S (DOD)
GKB DOWNTOWN B627 ET
GKB 146 BREEZE B533
NJW 73S W18 HOMETOWN 10Y ET (SOD,CHB)
/S LADY THOR 1271Y
HYALITE ON TARGET 936 (SOD)
/S LADY ADVANCE 9018W

Act. BW
80
Adj. WW
651
Adj. YW
1176
Adj. REA
14.0

CED	BW	WW	YW	SC	Milk	M+G	CEM	Uddr	Teat	Adj. IMF
+3.7	+1.7	+52	+72	+0.7	+29	+55	+1.7	+1.20	+1.20	3.89

CW	Fat	REA	Marb	BMI\$	BIIS	CHBS
+66	+.021	+54	+38	+298	+380	+134

- 1818 is a stout featured, big hiped, big bodied, huge footed bull with added eye appeal and marbling.

- Ranks in the top 4% of the breed for Marb.



LOT 49

50
67

GKB BELTON 1821

P44305615 • DOB 10/9/21 • TAT. 1821 • Polled
{DLF,HYF,IEF,MSUDF,MDF}

NJW 98S R117 RIBEYE 88X ET (SOD,CHB)
GKB PRCC 88X BELTON 213 ET
GKB EJE B627 BREEZE B929 ET

WLB MR CANADA 10Z 15B
GKB 4208 RIBEYE LADY 8572 ET
C 95T 88X RIBEYE LADY 4208 ET

SHF RIB EYE M326 R117 (CHB,SOD)
NJW 9126J DEW DOMINO 98S (DOD)
GKB DOWNTOWN B627 ET
GKB 146 BREEZE B533
WLB WINCHESTER ANSER 90X 10Z
REMITALL GRAVES JUNO 204S
NJW 98S R117 RIBEYE 88X ET (SOD,CHB)
RPH MAIDEN 95T

Act. BW
83
Adj. WW
650
Adj. YW
1151
Adj. REA
10.6

CED	BW	WW	YW	SC	Milk	M+G	CEM	Uddr	Teat	Adj. IMF
+1.0	+2.6	+61	+89	+0.4	+43	+74	+0.4	+1.30	+1.40	3.32

CW	Fat	REA	Marb	BMI\$	BIIS	CHBS
+51	-.029	+43	+13	+309	+385	+102

- 1821 is a moderate birth bull with added maternal values. His maternal granddam, 4208, is a maternal sister to Wildcat.

- Ranks in the top 1% of the breed for Milk and M+G; top 10% for Teat.



C ETF WILDCAT 4248 ET

Maternal brother to granddam of Lot 50

sons of Belton 213 & Corps Command

51
lot

GKB BELTON 1826

44305620 • DOB 10/12/21 • TAT. 1826 • Horned
{DLF,HYF,IEF,MSUDF,MDF}

NJW 98S R117 RIBEYE 88X ET (SOD,CHB)
GKB PRCC 88X BELTON 213 ET
GKB EJE B627 BREEZE B929 ET

BAR S LHF 028 240 (CHB)
GKB 240 BREEZE 371B 8635
GKB 88X BREEZE B113 371B ET

SHF RIB EYE M326 R117 (CHB,SOD)
NJW 9126J DEW DOMINO 98S (DOD)
GKB DOWNTOWN B627 ET
GKB 146 BREEZE B533

CHURCHILL SENSATION 028X (SOD)
CHURCHILL LADY 078X
NJW 98S R117 RIBEYE 88X ET (SOD,CHB)
GKB TMH 158W BREEZE B113 ET

Act. BW

90

Adj. WW

702

Adj. YW

1171

Adj. REA

11.5

CED	BW	WW	YW	SC	Milk	M+G	CEM	Uddr	Teat	Adj. IMF
+1.9	+3.4	+49	+72	+1.3	+39	+63	+1.6	+1.40	+1.40	3.12



CW	Fat	REA	Marb	BMI\$	BIIS	CHBS
+50	+0.11	+28	+35	+400	+484	+114

- 1826 has added marbling to go along with his excellent maternal traits, as you would expect from the Breeze lineage.
- Ranks in the top 2% of the breed for Milk and Teat; top 5% for Udder; top 10% for Marb.

52
lot

GKB BELTON 1816

44419603 • DOB 10/7/21 • TAT. 1816 • Horned

NJW 98S R117 RIBEYE 88X ET (SOD,CHB)
GKB PRCC 88X BELTON 213 ET
GKB EJE B627 BREEZE B929 ET

GKB 88X GABRIEL 45B ET
GKB 45B SWEETTHING 8686 ET
BF 144U SWEET THING 2103 ET

SHF RIB EYE M326 R117 (CHB,SOD)
NJW 9126J DEW DOMINO 98S (DOD)
GKB DOWNTOWN B627 ET
GKB 146 BREEZE B533

NJW 98S R117 RIBEYE 88X ET (SOD,CHB)
BR GABRIELLE 5082
TH 75J 243R BAILOUT 144U ET (SOD)
BF FLIRTATIOUS 713T ET

Act. BW

71

Adj. WW

606

Adj. YW

1058

Adj. REA

CED	BW	WW	YW	SC	Milk	M+G	CEM	Uddr	Teat	Adj. IMF
+8.2	+0.8	+41	+70	+0.6	+28	+49	+3.7	+1.30	+1.40	



CW	Fat	REA	Marb	BMI\$	BIIS	CHBS
+60	+0.11	+45	+29	+275	+341	+131



- Recommended for use on heifers.
- 1816 is a calving-ease son of Belton with marbling. His dam is stacked with top cow families like 5082 and Flirtatious 713T.
- Ranks in the top 10% for BW and Marb.



LOT 53

53
lot

BR CORPS COMMAND 1327

P44301008 • DOB 9/30/21 • TAT. 1327 • Homozygous Polled
{DLF,HYF,IEF,MSUDF}

SCHU-LAR ON TARGET 22S (CHB,SOD)
SPEARHEAD 22S CORPS COMMANDE14 (CHB)
SPEARHEAD LULU BELLE B27 (DOD)

LOEWEN M326 SIR 33T
LOEWEN MISS 33T B42 F27 ET
LOEWEN 77 48 MISS 344N 4RB42ET

SCHU-LAR 5N OF 9L 3008 (CHB,SOD)
SCHU-LAR 208 OF 1H 121 ET (DOD)
SPEARHEAD RIBEYE TROOPER Z32
SPEARHEAD 4R LULU Z7

KCF BENNETT 3008 M326 (CHB,SOD)
HVH OKSANA 4L 33N
MSU TCF REVOLUTION 4R (SOD)
PCR JACKLYN NIKOLE 344N

Act. BW

79

Adj. WW

757

Adj. YW

1196

Adj. REA

14.8

CED	BW	WW	YW	SC	Milk	M+G	CEM	Uddr	Teat	Adj. IMF
+0.3	+3.3	+63	+107	+1.4	+23	+54	+3.3	+1.20	+1.20	2.80



CW	Fat	REA	Marb	BMI\$	BIIS	CHBS
+87	+0.11	+67	+12	+361	+438	+143



- Homozygous Polled.
- 1327 is a dark red, short-marked son of Corps Command with extra pigment. He is a performance-oriented, stout featured bull with a unique pedigree. His dam is a maternal sister to Genesis.
- Ranks in the top 4% of the breed for CW; top 10% for YW and CHB.



SPEARHEAD 22S CORPS COMMANDE14

Sire of Lots 53 & 54

54
lot

GKB COMMANDER 1644

P44310145 • DOB 9/17/21 • TAT. 1644 • Homozygous Polled
{DLF,HYF,IEF,MSUDF,MDF}

SCHU-LAR ON TARGET 22S (CHB,SOD)
SPEARHEAD 22S CORPS COMMANDE14 (CHB)
SPEARHEAD LULU BELLE B27 (DOD)

NJW 33TB 100W TRUST 167Y (CHB)
LOEWEN MISS 167Y 71C 10E
LOEWEN 0424 OKSANA 33N C71 ET

SCHU-LAR 5N OF 9L 3008 (CHB,SOD)
SCHU-LAR 208 OF 1H 121 ET (DOD)
SPEARHEAD RIBEYE TROOPER Z32
SPEARHEAD 4R LULU Z7

NJW 73S M326 TRUST 100W ET (SOD,CHB)
BROOKVIEW 242 TEQUILA ROSE 33T
ALH 034 PLATO DOM 0424 (SOD)
HVH OKSANA 4L 33N

Act. BW

78

Adj. WW

569

Adj. YW

1021

Adj. REA

10.9

CED	BW	WW	YW	SC	Milk	M+G	CEM	Uddr	Teat	Adj. IMF
+6.5	+1.6	+58	+92	+1.4	+25	+55	+5.2	+1.30	+1.40	3.43



CW	Fat	REA	Marb	BMI\$	BIIS	CHBS
+81	+1.31	+72	+31	+382	+471	+141



- Homozygous Polled.
- Big spread son of Command with added carcass value. His dam traces back to the polled herd sire producer Oksana 4L 33N. Bred-in predictability.
- Ranks in the top 5% of the breed for REA; top 10% for CW, Marb and CHB.

sons of Blueprint



LOT 56



BR BAILEE 1066 ET
Maternal granddam of Lot 56

55
lot

BR BLUEPRINT 1302

P44300989 • DOB 9/8/21 • TAT. 1302 • Homozygous Polled
{DLF,HYF,IEF,MSUDF}

R LEADER 6964 (SOD)
BOYD 31Z BLUEPRINT 6153
NJW 91H 100W RITA 31Z ET

KCF BENNETT ENCORE Z311 ET (SOD,CHB)
LOEWEN REVA Z311 E21 ET
C&L LOEWEN REVA X51 20A

HYALITE ON TARGET 936 (SOD)
R MISS REVOLUTION 1009 (DOD)
NJW 73S M326 TRUST 100W ET (SOD,CHB)
REMITALL RITA 91H
SCHU-LAR ON TARGET 22S (CHB,SOD)
KCF MISS REVOLUTION X338 ET
KCF BENNETT REVOLUTION X51 (CHB,SOD)
HVH OKSANA 4L 33N

CED	BW	WW	YW	SC	Milk	M+G	CEM	Uddr	Teat	Adj. IMF
+11.3	+0.9	+62	+99	+1.6	+25	+56	+5.5	+1.40	+1.40	3.14



CW	Fat	REA	Marb	BMI\$	BIIS	CHBS
+66	+0.061	+3.4	+3.5	+443	+542	+139



- Homozygous Polled and recommended for use on heifers.
- Short-marked, heavily pigmented, calving-ease herd bull prospect with an excellent EPD profile. 1302 excels in phenotype, length of body and structural correctness. His dam is a beautiful uddered, picture-perfect daughter of Z311 and out of the Reva 20A female that was a feature high seller in the Loewen Dispersal.
- Ranks in the top 3% of the breed for BII; top 4% for CED, SC and BMI; top 5% for Udder; top 10% for Teat and Marb.

56
lot

BR BLUEPRINT 1311

P44300995 • DOB 9/13/21 • TAT. 1311 • Homozygous Polled
{DLF,HYF,IEF,MSUDF}

R LEADER 6964 (SOD)
BOYD 31Z BLUEPRINT 6153
NJW 91H 100W RITA 31Z ET

BR HUTTON 4030ET
BR BAILEE KATE 6033 ET
BR BAILEE 1066 ET

HYALITE ON TARGET 936 (SOD)
R MISS REVOLUTION 1009 (DOD)
NJW 73S M326 TRUST 100W ET (SOD,CHB)
REMITALL RITA 91H
NJW 73S 980 HUTTON 109Z ET
BR CSF BRIELLE 8052 ET
DM BR SOONER (CHB)
BR GABRIELLE 5082

CED	BW	WW	YW	SC	Milk	M+G	CEM	Uddr	Teat	Adj. IMF
+9.4	+1.7	+59	+90	+0.7	+31	+60	+5.4	+1.50	+1.50	2.97



CW	Fat	REA	Marb	BMI\$	BIIS	CHBS
+70	+0.051	+5.0	+0.08	+350	+423	+118



- Homozygous Polled and recommended for use on heifers.
- 1311 is a stout featured, dark red, short-marked, calving-ease son of Blueprint with added pigment. His dam is a phenomenal first-calf heifer that is sired by 4030 and out of a Sooner X Gabrielle.
- Ranks in the top 1% of the breed for Udder; top 2% for Teat; top 10% for CED.

Join us in Desdemona March 16th





LOT 58

57
lot

BR BLUEPRINT 1298

P44415677 • DOB 9/5/21 • TAT. 1298 • Polled

R LEADER 6964 (SOD)
BOYD 31Z BLUEPRINT 6153
NJW 91H 100W RITA 31Z ET

BR HUTTON 4030ET
BR CHLOE 9184
BR CHLOE 6027

HYALITE ON TARGET 936 (SOD)
R MISS REVOLUTION 1009 (DOD)
NJW 73S M326 TRUST 100W ET (SOD,CHB)
REMITALL RITA 91H
NJW 73S 980 HUTTON 109Z ET
BR CSF BRIELLE 8052 ET
BR HUTTON 4030ET
BR CHLOE 4007A

Act. BW
80
Adj. WW
715
Adj. YW
1174
Adj. REA
12.3

CED	BW	WW	YW	SC	Milk	M+G	CEM	Uddr	Teat	Adj. IMF
+5.8	+2.9	+63	+98	+1.5	+30	+62	+2.9	+1.30	+1.40	3.05



CW	Fat	REA	Marb	BMI\$	BIIS	CHBS
+72	+0.021	+53	+0.03	+328	+401	+119



- Extra calving ease with great growth in this powerfully constructed son of Blueprint. Strong maternal lineage in his linebred 4030 dam.
- Ranks in the top 5% of the breed for Udder; top 10% for SC and Teat.

58
lot

BR BLUEPRINT 1331

P44305503 • DOB 10/7/21 • TAT. 1331 • Polled
{DLF,HYF,IEF,MSUDF}

R LEADER 6964 (SOD)
BOYD 31Z BLUEPRINT 6153
NJW 91H 100W RITA 31Z ET

UPS DISTINCTION (CHB)
BR KATE 7134
BR KATE RIELLE 5532 ET

HYALITE ON TARGET 936 (SOD)
R MISS REVOLUTION 1009 (DOD)
NJW 73S M326 TRUST 100W ET (SOD,CHB)
REMITALL RITA 91H
CHURCHILL SENSATION 028X (SOD)
UPS MISS KNIGHT 4841
NJW 73S W18 HOMETOWN 10Y ET (SOD,CHB)
BR GABRIELLE 5082

Act. BW
84
Adj. WW
649
Adj. YW
1199
Adj. REA
11.8

CED	BW	WW	YW	SC	Milk	M+G	CEM	Uddr	Teat	Adj. IMF
+8.7	+1.5	+60	+95	+1.0	+32	+62	+4.6	+1.50	+1.60	3.68



CW	Fat	REA	Marb	BMI\$	BIIS	CHBS
+70	+0.111	+36	+0.41	+447	+549	+145



- Recommended for use on heifers.
- 1331 is a moderate, short-marked, calving-ease son of Blueprint that is heavily pigmented. He is easy fleshing with added maternal traits, marbling and \$Indexes.
- Ranks in the top 1% for Udder and Teat; top 2% for BIIS; top 3% for BMI and Marb; top 10% for CED and CHB.

Visit HerefordAdvantage.com to get started today!

HEREFORD \$CHB ADVANTAGE

REQUIREMENTS

- Source & Age verification
- Genetic merit
 - Minimum of 50% Hereford genetics
 - Bull battery ranking in top 50% of breed for \$CHB index (bull battery average)
 - Bull ownership transferred (all bulls)
- Vaccination program – two rounds of vaccinations pre-weaning (minimum)
 - Recommended minimum protocol:
- BQA certification

PrimeVAC 34
BY WELCH ANIMAL HEALTH

BENEFITS

- Genetic improvement tool
 - Sire EPD and profit index summary
- Added market exposure
 - Free listing at HerefordMarketplace.com
- Enrollment cost - \$3.00/hd. (verification + eID tag)

Look for this logo in Hereford bull sale catalogs to identify sires meeting the genetic requirements for the Hereford Advantage program.

American Hereford Association | (816) 842-3757 | 11500 NW Ambassador Drive, Suite 410, Kansas City, MO 64153 | HerefordAdvantage.com

sons of Classified & American Classic



LOT 59

59 GKB GCC CLASSIFIED 1510

44371106 • DOB 9/7/21 • TAT. 1510 • Horned
{DLF,HYF,IEF,MSUDF,MDF}

C SPOT ON 6128 ET
CH CLASSIFIED 850 ET
CH MS RAINBEAU 411

HAPP BK VALOR 37C ET
BK DARYA 6208G
BK DARYA 6208D ET

CRR 5280
C 88X NOTICE ME 1311 ET
TH 22R 16S LAMBEAU 17Y (SOD)
CH MS REBA 7016 ET
HAPP EXTRA POINT 1220 ET
JSF 12N LADY VAL 9T
NJW 98S R117 RIBEYE 88X ET (SOD,CHB)
BK H YAHTZEE 1088

Act. BW

55

Adj. WW

Adj. YW

1036

Adj. REA

CED	BW	WW	YW	SC	Milk	M+G	CEM	Uddr	Teat	Adj. IMF
+10.6	-0.4	+54	+86	+1.1	+26	+53	+4.2	+1.50	+1.40	2.34



CW	Fat	REA	Marb	BMS	BIS	CHBS
+84	+0.11	+59	+0.05	+349	+415	+125



- Recommended for use on heifers.
- Stylish calving-ease son of Classified. You will want to keep all his daughters!
- Ranks in the top 1% of the breed for Udder; top 5% for CED and BW; top 10% for Teat and CW.



LOT 60

60 GKB AMERICAN CLASSIC J86

P44282450 • DOB 8/24/21 • TAT. J86 • Scurred
{DLF,HYF,IEF,MSUDF,MDF}

ECR WHO MAKER 210 ET
T/R BPF AMERICANCLASSIC 561CET
TFR PARIS 415 ET

CRR 719 CATAPULT 109 (SOD)
SULL HARLEY TOO 7310E ET
LCC TWO TIMIN 438 ET

DKF RO CASH FLOW 0245 ET (SOD)
RV GOLDEN LADY 5064
LAGRAND RELOAD 80P ET (SOD,CHB)
CRR D03 COTTON 356
TH 122 711 VICTOR 719T (SOD)
CRR 4037 ECLIPSE 808
REMITALL ONLINE 122L (CHB,SOD)
RST ROF REBA 28H

Act. BW

82

Adj. WW

Adj. YW

1097

Adj. REA

CED	BW	WW	YW	SC	Milk	M+G	CEM	Uddr	Teat	Adj. IMF
-4.4	+5.3	+64	+104	+0.8	+22	+54	-2.8	+1.20	+1.20	3.20



CW	Fat	REA	Marb	BMS	BIS	CHBS
+65	-0.29	+53	-1.10	+247	+308	+98

- High growth son of American Classic that is out of SULL Harley Too 7310E. J86 is a big hipped, stout featured bull with added eye appeal. His donor dam is striking in profile with tremendous volume, bone and hip. Good looking bull with style and presence...grab onto this elite bred individual.



T/R BPF
AMERICAN
CLASSIC 561CET
Sire of Lot 60



SULL HARLEY
TOO 7310E ET
Dam of Lot 60

Most all the bulls selling are DNA tested and have genomic-enhanced EPDs. The accuracy of these EPDs is equal to each bull already having performance recorded on 17 of his own calves for calving ease, 8 calves for birth weight, 12 calves for weaning weight, and 9 calves for yearling weight! There is enough data backing these bulls to be able to predict how their calves are capable of performing—even before they are conceived.

sons of Extra Deep 195C



LOT 61

61
lot

GKB EXTRA DEEP 1842

44305628 • DOB 10/17/21 • TAT. 1842 • Horned
{DLF,HYF,IEF,MSUDF,MDF}

ECR L18 EXTRA DEEP 9279 (SOD,CHB)
GKB 9279 EXTRA DEEP 195C ET
C 88X NOTICE ME 2067 ET

TFR KU ROLL THE DICE 1326
HFR FANNY 1819 ET
CECC MRP STOCKMANS IMAGE 2059



CED	BW	WW	YW	SC	Milk	M+G	CEM	Uddr	Teat	Adj. IMF
-1.5	+5.7	+60	+94	+1.3	+30	+61	-2.1	+1.20	+1.20	3.48



CW	Fat	REA	Marb	BMI\$	BIIS	CHBS
+67	+.031	+45	+16	+343	+423	+110

GO EXCEL L18 (SOD)
OXH CHRISTI 0028
N.JW 98S R117 RIBEYE 88X ET (SOD,CHB)
C NOTICE ME ET
STAR TCF LOCK-N-LOAD 300W ET (CHB)
LH LANGFORD LADY 0253 ET
C STOCKMAN 2059 ET (CHB,SOD)
STAR KKH SSF MIRROR IMAGE 286W

Act. BW
120
Adj. WW
649
Adj. YW
1220
Adj. REA
12.7

- 1842 is a heavily constructed son of GKB 9279 Extra Deep 195C ET. Showing tremendous shape, body and phenotype, he is a red-necked, short-marked growth bull.



LOT 62

62
lot

GKB EXTRA DEEP 1975

44305643 • DOB 11/16/21 • TAT. 1975 • Horned
{DLF,HYF,IEF,MSUDF,MDF}

ECR L18 EXTRA DEEP 9279 (SOD,CHB)
GKB 9279 EXTRA DEEP 195C ET
C 88X NOTICE ME 2067 ET

C SPECIAL EDITION 6105 ET (CHB)
GKB SCC 6105 IDA KAY B230 8614
GKB SCC 88X IDA KAY B230 ET



CED	BW	WW	YW	SC	Milk	M+G	CEM	Uddr	Teat	Adj. IMF
-0.3	+4.9	+57	+83	+0.9	+29	+57	-2.8	+1.20	+1.10	3.87



CW	Fat	REA	Marb	BMI\$	BIIS	CHBS
+62	-.019	+68	+17	+371	+446	+119



GO EXCEL L18 (SOD)
OXH CHRISTI 0028
N.JW 98S R117 RIBEYE 88X ET (SOD,CHB)
C NOTICE ME ET
CRR 5280
C 88X NOTICE ME 1311 ET
N.JW 98S R117 RIBEYE 88X ET (SOD,CHB)
C IDA KAY GOLD 5006 ET

Act. BW
95
Adj. WW
585
Adj. YW
1103
Adj. REA
12.0

- 1975 is a dark red, short-marked son of Extra Deep 195C with added pigment. He possesses tremendous muscle shape, body depth, huge feet and bone.
- Ranks in the top 10% of the breed for REA.



ECR L18 EXTRA DEEP 9279
Grandsire of Lots 61-63

63
lot

GKB EXTRA DEEP 1973

P44305641 • DOB 11/13/21 • TAT. 1973 • Polled
{DLF,HYF,IEF,MSUDF,MDF}

ECR L18 EXTRA DEEP 9279 (SOD,CHB)
GKB 9279 EXTRA DEEP 195C ET
C 88X NOTICE ME 2067 ET

CRR 322 BELL 617
HAPP WILD POINTS 1830
BK DEFYING POINTS 642D ET



CED	BW	WW	YW	SC	Milk	M+G	CEM	Uddr	Teat	Adj. IMF
+5.9	+0.7	+51	+76	+0.6	+30	+56	+1.4	+1.30	+1.30	2.87



CW	Fat	REA	Marb	BMI\$	BIIS	CHBS
+68	+.011	+65	+05	+395	+459	+112

GO EXCEL L18 (SOD)
OXH CHRISTI 0028
N.JW 98S R117 RIBEYE 88X ET (SOD,CHB)
C NOTICE ME ET
CRR 109 CATAPULT 322
BRL WHIRL 59A
C ETF WILDCAT 4248 ET (CHB)
HAPP KOOL AID POINTS 1218 ET

Act. BW
89
Adj. WW
571
Adj. YW
1059
Adj. REA
12.1

- Additional calving ease in this Extra Deep 195C son that possesses the same style and design as his paternal brothers. His dam traces back to the legendary Kool Aid Points cow.
- Ranks in the top 10% of the breed for REA.

64
lot

BR F059 HILLCREST 1292

P44300983 • DOB 9/3/21 • TAT. 1292 • Polled
{DLF,HYF,IEF,MSUDF}

R LEADER 6964 (SOD)
BR HILLCREST F059 ET
BR BRIANNE 3035

BR COOL HAND LUKE 6615 ET
BR BRIELLE 9154
BR BRIELLE 4090 ET

HYALITE ON TARGET 936 (SOD)
R MISS REVOLUTION 1009 (DOD)
CRR ABOUT TIME 743 (SOD)
BR DM BRIANNE 8020 ET
CRR ABOUT TIME 743 (SOD)
BR CSF GABRIELLE 8051 ET
UPS TCC NITRO 1ET (SOD)
BR CSF BRIELLE 8052 ET

Act. BW
68
Adj. WW
592
Adj. YW
1055
Adj. REA
12.8

CED	BW	WW	YW	SC	Milk	M+G	CEM	Uddr	Teat	Adj. IMF
+7.0	+1.6	+50	+80	+1.0	+17	+43	+1.3	+1.30	+1.20	3.02



CW	Fat	REA	Marb	BMI\$	BIIS	CHBS
+67	-.009	+43	-.07	+313	+366	+106

- Recommended for use on heifers.
- 1292 is an easy fleshing, smooth made son of Hillcrest that has eye appeal and shape. BR Hillcrest F059 is a low birth weight, homozygous polled son of R Leader 6964. If you are looking to add shape and style yet keep the birth weights in check, grab onto this tank.



LOT 64

65
lot

GKB HILLCREST 1621

P44280872 • DOB 7/4/21 • TAT. 1621 • Polled
{DLF,HYF,IEF,MSUDF,MDF}

R LEADER 6964 (SOD)
BR HILLCREST F059 ET
BR BRIANNE 3035

BR NITRO AVENTUS 3116 ET
BR MADELYNN 6812 ET
BR MADELYNN 8017 ET

HYALITE ON TARGET 936 (SOD)
R MISS REVOLUTION 1009 (DOD)
CRR ABOUT TIME 743 (SOD)
BR DM BRIANNE 8020 ET
UPS TCC NITRO 1ET (SOD)
BR ABIGAIL 8130 ET
DM BR SOONER (CHB)
BR L1 DOMINETTE 6052

Act. BW
74
Adj. WW
674
Adj. YW
1136
Adj. REA
14.9

CED	BW	WW	YW	SC	Milk	M+G	CEM	Uddr	Teat	Adj. IMF
+2.4	+3.3	+61	+100	+1.3	+29	+60	0.0	+1.50	+1.50	2.51



CW	Fat	REA	Marb	BMI\$	BIIS	CHBS
+62	+.021	+31	+.09	+316	+391	+106

- Nicely balanced son of Hillcrest with added eye appeal and growth.
- Granddam Madelynn 8017 has produced herd sires and show ring champions alike for Barber Ranch for several years. Other descendants also sell.
- 1621 ranks in the top 1% of the breed for Udder and top 2% for Teat.



BR MADELYNN 8017 ET

Maternal granddam of Lot 65...other grandsons sell

66
lot

BR F059 HILLCREST 1301

P44300988 • DOB 9/8/21 • TAT. 1301 • Homozygous Polled
{DLF,HYF,IEF,MSUDF}

R LEADER 6964 (SOD)
BR HILLCREST F059 ET
BR BRIANNE 3035

BR SOONER 7007 ET
BR LADY DOM 9140
C KLC 105Y LADY DOM 5096

HYALITE ON TARGET 936 (SOD)
R MISS REVOLUTION 1009 (DOD)
CRR ABOUT TIME 743 (SOD)
BR DM BRIANNE 8020 ET
DM BR SOONER (CHB)
LCC TWO TIMIN 438 ET
CL 1 DOMINO 105Y (SOD)
L3 LADY XPRT 366

Act. BW
76
Adj. WW
662
Adj. YW
1143
Adj. REA
12.2

CED	BW	WW	YW	SC	Milk	M+G	CEM	Uddr	Teat	Adj. IMF
+5.9	+1.0	+54	+88	+1.5	+28	+55	+2.5	+1.30	+1.30	2.86



CW	Fat	REA	Marb	BMI\$	BIIS	CHBS
+72	+.041	+43	+.07	+345	+413	+119



- Homozygous Polled and recommended for use on heifers.
- Heifer safe son of Hillcrest that is big bodied and structurally correct. His dam descends from a sire that is a direct result of the immortal female maker Sooner and the legendary donor dam Two Timin, commonly known as "Harley."

67
lot

BR F059 HILLCREST 1328

P44305500 • DOB 10/3/21 • TAT. 1328 • Homozygous Polled
{DLF,HYF,IEF,MSUDF}

R LEADER 6964 (SOD)
BR HILLCREST F059 ET
BR BRIANNE 3035

GERBER ANODYNE 001A (CHB)
BR OKSANA 9164
LOEWEN OKSANA 167Y E19 ET

HYALITE ON TARGET 936 (SOD)
R MISS REVOLUTION 1009 (DOD)
CRR ABOUT TIME 743 (SOD)
BR DM BRIANNE 8020 ET
KCF BENNETT 9126J R294 (SOD,CHB)
GERBER 627S HOLLY 096Y
NJW 33TB 100W TRUST 167Y (CHB)
HVH OKSANA 4L 33N

Act. BW
84
Adj. WW
764
Adj. YW
1312
Adj. REA
12.0

CED	BW	WW	YW	SC	Milk	M+G	CEM	Uddr	Teat	Adj. IMF
-1.1	+4.0	+72	+118	+1.8	+36	+72	-0.1	+1.30	+1.30	3.35



CW	Fat	REA	Marb	BMI\$	BIIS	CHBS
+82	+.031	+42	+.11	+319	+405	+130



- Homozygous Polled.
- 1328 has immense growth and maternal traits. He is out of an Anodyne first-calf heifer that is backed by the Oksana cow family.
- Ranks in the top 2% of the breed for WW, YW, SC and M+G; top 5% for Milk; top 10% for CW.

sons of Hillcrest & Bennett 9061

68
6/7

BR HILLCREST 1372

P44320064 • DOB 12/20/21 • TAT. 1372 • Polled
{DLF,HYF,IEF,MSUDF}

R LEADER 6964 (SOD)
BR HILLCREST F059 ET
BR BRIANNE 3035

CRR 719 CATAPULT 109 (SOD)
BR ALAINNA G027 ET
BR 124Y ALAINNA 4138

HYALITE ON TARGET 936 (SOD)
R MISS REVOLUTION 1009 (DOD)
CRR ABOUT TIME 743 (SOD)
BR DM BRIANNE 8020 ET
TH 122 711 VICTOR 719T (SOD)
CRR 4037 ECLIPSE 808
BR COPPER 124Y (CHB)
BR 74 ALAINNA 3150

Act. BW
75
Adj. WW
530
Adj. YW
1307
Adj. REA
13.4

CED	BW	WW	YW	SC	Milk	M+G	CEM	Uddr	Teat	Adj. IMF
+3.0	+1.9	+63	+104	+1.5	+29	+60	-0.7	+1.20	+1.20	2.26



CW	Fat	REA	Marb	BMI\$	BIIS	CHBS
+71	+.021	+.37	+.11	+324	+402	+125

- Big spread son of Hillcrest that is out of a phenomenal first-calf heifer.
- Ranks in the top 10% of the breed for SC.

69
6/7

BR HILLCREST 1367

P44320059 • DOB 12/10/21 • TAT. 1367 • Homozygous Polled
{DLF,HYF,IEF,MSUDF}

R LEADER 6964 (SOD)
BR HILLCREST F059 ET
BR BRIANNE 3035

BR SRR C&L LOEWEN VALIANT (CHB)
BR MISS VALIANT 9211
LOEWEN MISS 3B 13D

HYALITE ON TARGET 936 (SOD)
R MISS REVOLUTION 1009 (DOD)
CRR ABOUT TIME 743 (SOD)
BR DM BRIANNE 8020 ET
EFBEEF BR VALIDATED B413 (CHB)
BR TRUST 100W 9118 3358
LOEWEN 936 10Y 3B
HVH MISS PATRIOT 42R

Act. BW
74
Adj. WW
543
Adj. YW
1407
Adj. REA
13.2

CED	BW	WW	YW	SC	Milk	M+G	CEM	Uddr	Teat	Adj. IMF
+3.4	+1.3	+57	+86	+1.2	+40	+68	+2.2	+1.40	+1.40	2.50



CW	Fat	REA	Marb	BMI\$	BIIS	CHBS
+61	+.001	+.30	+.18	+413	+494	+115

- Homozygous Polled.
- Strong maternal trait EPDs and moderate birth in this December-born son of Hillcrest.
- Ranks in the top 1% of the breed for Milk; top 5% for M+G and Udder; top 10% for Teat.

70
6/7

GKB 9061 BENNETT 1657

P44309973 • DOB 10/4/21 • TAT. 1657 • Polled
{DLF,HYF,IEF,MSUDF,MDF}

KCF BENNETT B716 D594 (CHB)
BR BENNETT 9061
BR JENNA E701 ET

BR SPECIAL ORDER E044 ET (CHB)
GKB BR AMANDA 9176
BR AMANDA 7128

KCF BENNETT DEVOUT B716 ET
KCF MISS 936 B415
ATLAS 66T MR HELTON 150Y ET
BR DM JENNA 7078 ET
UPS DISTINCTION (CHB)
SHF X45 40W Y158
BR HUTTON 4040ET
BR AMANDA 4414

Act. BW
89
Adj. WW
593
Adj. YW
1093
Adj. REA
11.3

CED	BW	WW	YW	SC	Milk	M+G	CEM	Uddr	Teat	Adj. IMF
+3.4	+3.7	+59	+100	+1.1	+27	+57	+0.7	+1.20	+1.30	3.34



CW	Fat	REA	Marb	BMI\$	BIIS	CHBS
+66	+.051	+.54	+.28	+496	+588	+135

- Excellent growth son of Bennett 9061 with added marbling. You will find several performance leaders throughout the pedigree of this well rounded individual.
- Ranks in the top 1% of the breed for BMI and BI.

72
6/7

GKB 9061 BENNETT 1658

P44309974 • DOB 10/5/21 • TAT. 1658 • Polled
{DLF,HYF,IEF,MSUDF,MDF}

KCF BENNETT B716 D594 (CHB)
BR BENNETT 9061
BR JENNA E701 ET

BR SOONER 7007 ET
GKB BR ALAINNA 9149
BR 124Y ALAINNA 4138

KCF BENNETT DEVOUT B716 ET
KCF MISS 936 B415
ATLAS 66T MR HELTON 150Y ET
BR DM JENNA 7078 ET
DM BR SOONER (CHB)
LCC TWO TIMIN 438 ET
BR COPPER 124Y (CHB)
BR 74 ALAINNA 3150

Act. BW
77
Adj. WW
536
Adj. YW
1013
Adj. REA
9.7

CED	BW	WW	YW	SC	Milk	M+G	CEM	Uddr	Teat	Adj. IMF
+5.5	+1.2	+47	+77	+0.6	+19	+43	0.0	+1.30	+1.30	2.44



CW	Fat	REA	Marb	BMI\$	BIIS	CHBS
+55	-.009	+.28	+.22	+385	+458	+115

- Stylish son of Bennett 9061 that offers additional calving ease and moderate birth. 1658 has a loaded pedigree that features some of the Hereford breed's great breeding pieces, including Sooner, "Harley" and Copper 124Y.

71
6/7

GKB 9061 BENNETT 1659

P44309975 • DOB 10/5/21 • TAT. 1659 • Polled
{DLF,HYF,IEF,MSUDF,MDF}

KCF BENNETT B716 D594 (CHB)
BR BENNETT 9061
BR JENNA E701 ET

KCF BENNETT B716 D594 (CHB)
GKB BR AMY 9195
BR AMY 7135

KCF BENNETT DEVOUT B716 ET
KCF MISS 936 B415
ATLAS 66T MR HELTON 150Y ET
BR DM JENNA 7078 ET
KCF BENNETT DEVOUT B716 ET
KCF MISS 936 B415
BAR S LHF 028 240 (CHB)
BR AMY RIELLE 5538 ET

Act. BW
89
Adj. WW
503
Adj. YW
1024
Adj. REA
11.4

CED	BW	WW	YW	SC	Milk	M+G	CEM	Uddr	Teat	Adj. IMF
+7.4	+2.3	+51	+83	+1.8	+25	+50	+2.8	+1.40	+1.50	2.29



CW	Fat	REA	Marb	BMI\$	BIIS	CHBS
+43	+.011	+.08	+.16	+540	+622	+96

- 1659 offers calving ease and fertility with power and phenotype.
- Ranks in the top 1% of the breed for BMI and BI; top 2% for SC and Teat; top 5% for Udder.

73
6/7

GKB TY BENNETT 1886

P44306320 • DOB 10/3/21 • TAT. 1886 • Polled
{DLF,HYF,IEF,MSUDF,MDF}

KCF BENNETT B716 D594 (CHB)
BR BENNETT 9061
BR JENNA E701 ET

IMR 955W DOMINO 1094Y
GKB TY MS COPPER 62 9780
TY MISS COPPER MIDAS 62

KCF BENNETT DEVOUT B716 ET
KCF MISS 936 B415
ATLAS 66T MR HELTON 150Y ET
BR DM JENNA 7078 ET
CL 1 DOMINO 955W (SOD)
IMR 2040 DOMINETTE 512R (DOD)
BR COPPER 120Y
TY MISS TARZANA MIDAS 810

Act. BW
89
Adj. WW
585
Adj. YW
1055
Adj. REA
12.6

CED	BW	WW	YW	SC	Milk	M+G	CEM	Uddr	Teat	Adj. IMF
-0.4	+2.8	+57	+85	+1.2	+25	+53	-1.4	+1.30	+1.40	3.11



CW	Fat	REA	Marb	BMI\$	BIIS	CHBS
+51	+.031	+.28	+.15	+442	+524	+93

- Moderate birth Bennett 9061 son with balance, style and added muscle shape.
- Ranks in the top 4% of the breed for BMI; top 5% for BI; top 10% for Teat.

sons of Special Edition

74
lot

GKB SPECIAL EDITION 1951

44305631 • DOB 10/27/21 • TAT. 1951 • Horned
{DLF,HYF,IEF,MSUDF,MDF}

CRR 5280
C SPECIAL EDITION 6105 ET (CHB)
C 88X NOTICE ME 1311 ET

HH ADVANCE 2315Z ET
CH 2315 MS OK ADVANCE 6104
CH MS OK ADVANCE 2103

CED	BW	WW	YW	SC	Milk	M+G	CEM	Uddr	Teat	Adj. IMF
+0.8	+4.8	+57	+82	+1.9	+27	+56	-0.7	+1.30	+1.30	3.32
CW	Fat	REA	Marb	BMIS	BIIS	CHBS	SCHB			
+78	+0.41	+65	+34	+351	+438	+142				



- Powerfully built, eye-appealing son of Special Edition that has marbling. If you are looking to add length and style to a set of Grade 1 feeder calves that will top the market, it takes bulls of this caliber.
- Ranks in the top 1% of the breed for SC; top 10% for REA, Marb and CHB.



LOT 74

75
lot

GKB SPECIAL EDITION 1962

44305636 • DOB 11/2/21 • TAT. 1962 • Horned
{DLF,HYF,IEF,MSUDF,MDF}

CRR 5280
C SPECIAL EDITION 6105 ET (CHB)
C 88X NOTICE ME 1311 ET

HH ADVANCE 9144W (SOD)
CH MISS OK 9144 ADVANCE 4111
CH L1 COWGIRL 0176

CED	BW	WW	YW	SC	Milk	M+G	CEM	Uddr	Teat	Adj. IMF
+1.6	+3.6	+51	+80	+1.7	+25	+50	0.0	+1.30	+1.50	2.95
CW	Fat	REA	Marb	BMIS	BIIS	CHBS	SCHB			
+67	+0.41	+40	+29	+396	+478	+127				



- Balanced trait son of Special Edition with marbling and added fertility. He is stout made with extra rib shape.
- Ranks in the top 2% of the breed for Teat; top 3% for SC; top 5% for Udder; top 10% for Marb.



C SPECIAL EDITION 6105 ET
Sire of Lots 74-78

76
lot

GKB SPECIAL EDITION 1971

44305666 • DOB 11/11/21 • TAT. 1971 • Horned
{DLF,HYF,IEF,MSUDF,MDF}

CRR 5280
C SPECIAL EDITION 6105 ET (CHB)
C 88X NOTICE ME 1311 ET

GKB 88X BECKETT 67B
GKB 824U 67B HILLARY 7508 ET
IMR 396N MISS ADVANCE 824U

CED	BW	WW	YW	SC	Milk	M+G	CEM	Uddr	Teat	Adj. IMF
+0.4	+5.5	+69	+109	+1.1	+30	+65	-0.5	+1.20	+1.30	2.94
CW	Fat	REA	Marb	BMIS	BIIS	CHBS	SCHB			
+83	-0.59	+87	-0.05	+366	+436	+126				



- 1971 is a performance-bred son of Special Edition that has great depth of rib and muscle shape.
- Ranks in the top 1% of the breed for REA; top 5% for WW; top 10% for YW, M+G and CW.



LOT 76

sons of Special Edition & Black Hawk Down

77
6/21

GKB SPECIAL EDITION 1970

44305665 • DOB 11/11/21 • TAT. 1970 • Horned
{DLF,HYF,IEF,MSUDF,MDF}

CRR 5280
C SPECIAL EDITION 6105 ET (CHB)
C 88X NOTICE ME 1311 ET

HH ADVANCE 2315Z ET
CH 2315 MS OK ADVANCE 6129
CH MS OK ADVANCE 2023

CRR 719 CATAPULT 109 (SOD)
CRR 435 KELLY 178 (DOD)
NJW 98S R117 RIBEYE 88X ET (SOD,CHB)
C NOTICE ME ET
HH ADVANCE 0132X (SOD)
HH MS ADV 7008G 1ET
HH ADVANCE 9075W ET (SOD)
CH MS OK ADVANCE 6175

Act. BW
102
Adj. WW
514
Adj. YW
1041
Adj. REA
12.2

CED	BW	WW	YW	SC	Milk	M+G	CEM	Uddr	Teat	Adj. IMF
+2.1	+4.2	+52	+75	+1.3	+17	+43	+0.9	+1.10	+1.10	3.07

CW	Fat	REA	Marb	BMIS	BIIS	CHBS
+74	+.001	+.75	+.08	+309	+370	+125

- Stout made, easy fleshing bull with muscle shape and phenotype. His dam is a powerful, beautifully designed female that originated from the Curry Herefords program in Oklahoma.
- Ranks in the top 4% of the breed for REA.



C BLACK HAWK DOWN ET
Sire of Lots 79 & 80

78
6/21

GKB SPECIAL EDITION 1977

44305667 • DOB 11/26/21 • TAT. 1977 • Horned
{DLF,HYF,IEF,MSUDF,MDF}

CRR 5280
C SPECIAL EDITION 6105 ET (CHB)
C 88X NOTICE ME 1311 ET

GKB TMH GUIDEPOSTS B040
GKB B040 SARA LEE 64A
WH SARA LEE 004X

CRR 719 CATAPULT 109 (SOD)
CRR 435 KELLY 178 (DOD)
NJW 98S R117 RIBEYE 88X ET (SOD,CHB)
C NOTICE ME ET
JCS SHOWTIME
GKB MISS DOWNTOWN USA B811
TCC ORANGE COUNTY CHOPPER 70ET
WH MS REPUBLICAN 302

Act. BW
95
Adj. WW
519
Adj. YW
1060
Adj. REA
11.6

CED	BW	WW	YW	SC	Milk	M+G	CEM	Uddr	Teat	Adj. IMF
-2.6	+4.5	+58	+84	+1.6	+29	+58	-3.1	+1.20	+1.10	2.61

CW	Fat	REA	Marb	BMIS	BIIS	CHBS
+82	-.009	+.73	+.10	+360	+431	+134

- Pay attention to the age of 1977, as he is only a late November son of Special Edition. 1977 is a powerfully constructed bull with extra red meat and muscle.
- Ranks in the top 5% of the breed for REA; top 10% for SC and CW.

79
6/21

GKB BLACK HAWK DOWN 1519

P44308222 • DOB 10/18/21 • TAT. 1519 • Polled
{DLF,HYF,IEF,MSUDF,MDF}

WLB WINCHESTER POWERBALL 27A
C BLACK HAWK DOWN ET
BR BAILEE 1066 ET

R LEADER 6964 (SOD)
BOYD 108X DOREEN 7130
NJW 8S 4037 DOREEN 108X

WLB LEGO 83T 90X (SOD)
WLB 503W ALICE ET 8401Y
DM BR SOONER (CHB)
BR GABRIELLE 5082
HYALITE ON TARGET 936 (SOD)
R MISS REVOLUTION 1009 (DOD)
THM DURANGO 4037 (SOD)
NJW 9126J K014 DOREEN 8S ET

Act. BW
75
Adj. WW
571
Adj. YW
1106
Adj. REA
11.1

CED	BW	WW	YW	SC	Milk	M+G	CEM	Uddr	Teat	Adj. IMF
+7.4	+0.7	+51	+84	+0.9	+30	+56	+3.0	+1.40	+1.50	3.52

CW	Fat	REA	Marb	BMIS	BIIS	CHBS
+68	+.031	+.31	+.08	+385	+454	+107

- Recommended for use on heifers.
- 1519 is a calving-ease son of Black Hawk Down that is out of a beautiful Leader daughter.
- Ranks in the top 2% of the breed for Teat; top 5% for Udder; top 10% for BW.

80
6/21

GKB BLACK HAWK DOWN 1521

P44308224 • DOB 10/20/21 (TWIN) • TAT. 1521 • Polled
{DLF,HYF,IEF,MSUDF,MDF}

WLB WINCHESTER POWERBALL 27A
C BLACK HAWK DOWN ET
BR BAILEE 1066 ET

C DOUBLE YOUR MILES 6077 ET
C DOUBLE DOWN LASS 8018 ET
HHR PAY IN GOLD 1008X ET

WLB LEGO 83T 90X (SOD)
WLB 503W ALICE ET 8401Y
DM BR SOONER (CHB)
BR GABRIELLE 5082
CRR 5280
C 88X NOTICE ME 1311 ET
C-S PURE GOLD 98170 (SOD)
RR BONDED LADY P824

Act. BW
50
Adj. WW
600
Adj. YW
1100
Adj. REA
11.6

CED	BW	WW	YW	SC	Milk	M+G	CEM	Uddr	Teat	Adj. IMF
-3.4	+7.1	+73	+112	+0.6	+39	+76	-3.8	+1.30	+1.20	3.40

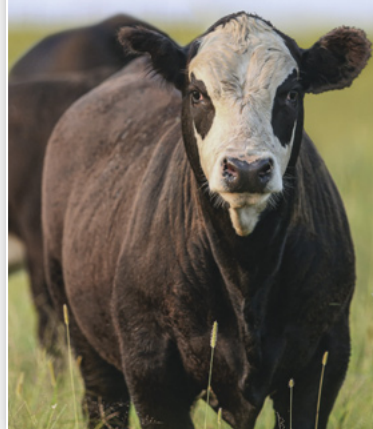
CW	Fat	REA	Marb	BMIS	BIIS	CHBS
+99	-.009	+.81	-.20	+299	+362	+134

- Incredible growth son of Black Hawk Down that has great muscle shape, power and balance. His dam is a maternal sister to C Eye Candy 2079 and C Candy Cane 4030 ET, both former National Champion females. Power with style!
- Ranks in the top 1% of the breed for M+G and CW; top 2% for WW and REA; top 3% for Milk; top 4% for YW.

MORE POUNDS. MORE CALVES. MORE PROFIT.

Herefords are known as the efficiency experts for a reason.
Herefords boost pregnancy rates by 7% and add \$30 per head in feedyard profitability in a crossbreeding system.
And Hereford genetics bring unrivaled hybrid vigor, longevity and disposition.

COME HOME TO HEREFORD.



HEREFORD
ASSOCIATION
Hereford.org | 816-842-3757

sons of Double Your Miles

81 GKB DOUBLE YOUR MILES 1805

44305608 • DOB 10/3/21 • TAT. 1805 • Horned
{DLF,HYF,IEF,MSUDF,MDF}

CRR 5280											Act. BW
C DOUBLE YOUR MILES 6077 ET											83
C 88X NOTICE ME 1311 ET											Adj. WW
											558
HH ADVANCE 2315Z ET											Adj. YW
CH 2315 MS OK ADVANCE 6124											1111
CH MISS OK ADVANCE 0102											Adj. REA
											11.9
CED	BW	WW	YW	SC	Milk	M+G	CEM	Uddr	Teat	Adj. IMF	
+3.7	+2.8	+52	+73	+0.7	+23	+49	-0.8	+1.20	+1.30	3.43	
GKB											
CW	Fat	REA	Marb	BMI\$	BIIS	CHBS					
+67	-.019	+36	.00	+327	+387	+108					

- Balanced EPD son of Double Your Miles that has added eye appeal. 1805 is a stout made, structurally correct individual. The Double Your Miles sons will add body, fleshing ability and pounds to your product.



C DOUBLE YOUR MILES 6077 ET
Sire of Lots 81-85

82 GKB DOUBLE YOUR MILES 1820

P44305614 • DOB 10/9/21 • TAT. 1820 • Polled
{DLF,HYF,IEF,MSUDF,MDF}

CRR 5280											Act. BW
C DOUBLE YOUR MILES 6077 ET											83
C 88X NOTICE ME 1311 ET											Adj. WW
											581
KCF BENNETT 3008 M326 (CHB,SOD)											Adj. YW
GKB M326 NOTICE ME TOO B242 ET											1083
C NOTICE ME TOO ET											Adj. REA
											12.0
CED	BW	WW	YW	SC	Milk	M+G	CEM	Uddr	Teat	Adj. IMF	
+6.2	+2.0	+53	+77	+0.7	+25	+51	-1.5	+1.20	+1.20	3.02	
GKB											
CW	Fat	REA	Marb	BMI\$	BIIS	CHBS					
+58	+.001	+27	-.07	+248	+302	+88					

- 1820 has more calving ease and moderate birth in a well-designed package with balanced traits. Study the pedigree, as this young herd sire stems from the immortal donors Notice Me and 1311, two of the most prominent donors in the Colyer Herefords program.

84 GKB DOUBLE YOUR MILES 1849

44305659 • DOB 10/24/21 • TAT. 1849 • Horned
{DLF,HYF,IEF,MSUDF,MDF}

CRR 5280											Act. BW
C DOUBLE YOUR MILES 6077 ET											95
C 88X NOTICE ME 1311 ET											Adj. WW
											686
LED GKB LEGEND 108 ET											Adj. YW
GKB 99B 108 DOMINETTE 7544											1297
GKB 0144 DOMINETTE 99B											Adj. REA
											13.2
CED	BW	WW	YW	SC	Milk	M+G	CEM	Uddr	Teat	Adj. IMF	
+0.4	+4.8	+69	+108	+1.0	+38	+73	-4.7	+1.40	+1.40	2.48	
GKB											
CW	Fat	REA	Marb	BMI\$	BIIS	CHBS					
+68	-.009	+47	+0.2	+424	+507	+102					

- Powerful built, performance-oriented son of Double Your Miles that possesses excellent maternal traits.
- Ranks in the top 1% of the breed for M+G; top 3% for Milk; top 4% for WW; top 5% for Udder; top 10% for YW, Teat, BMI and BI.

83 GKB DOUBLE YOUR MILES 1832

P44305622 • DOB 10/15/21 • TAT. 1832 • Polled
{DLF,HYF,IEF,MSUDF,MDF}

CRR 5280											Act. BW
C DOUBLE YOUR MILES 6077 ET											89
C 88X NOTICE ME 1311 ET											Adj. WW
											526
CHURCHILL SENSATION 028X (SOD)											Adj. YW
CH MISS LADY SENSATION 6114											1007
CH MISS OK 9144 ADVANCE 4111											Adj. REA
											12.8
CED	BW	WW	YW	SC	Milk	M+G	CEM	Uddr	Teat	Adj. IMF	
+8.4	+0.7	+53	+71	+1.1	+38	+64	+0.7	+1.40	+1.50	3.04	
GKB											
CW	Fat	REA	Marb	BMI\$	BIIS	CHBS					
+66	+.051	+29	+0.9	+476	+551	+111					

- Calving-ease son of Double Your Miles with tremendous maternal value that should work extremely well in a crossbreeding scenario.
- Ranks in the top 2% of the breed for Teat and BMI; top 3% for Milk and BI; top 5% for Udder; top 10% for CED, BW and M+G.

85 GKB DOUBLE YOUR MILES 1825

P44305619 • DOB 10/11/21 • TAT. 1825 • Scurred
{DLF,HYF,IEF,MSUDF,MDF}

CRR 5280											Act. BW
C DOUBLE YOUR MILES 6077 ET											90
C 88X NOTICE ME 1311 ET											Adj. WW
											582
C NOTICE ME MAXIMUM 1206 ET											Adj. YW
GKB 1206 BREEZE B73 210C											1023
GKB 146 BREEZE B73 ET											Adj. REA
											12.8
CED	BW	WW	YW	SC	Milk	M+G	CEM	Uddr	Teat	Adj. IMF	
+10.2	+1.6	+52	+64	+0.5	+20	+46	+1.4	+1.30	+1.40	3.51	
GKB											
CW	Fat	REA	Marb	BMI\$	BIIS	CHBS					
+65	+.071	+39	-.02	+359	+422	+94					

- Good looking calving-ease son of Double Your Miles with the added predictability of the Breeze cow family.
- Ranks in the top 10% of the breed for CED.

son of County Line

86
67

BR COUNTY LINE 1348

44422663 • DOB 11/4/21 • TAT. 1348 • Horned

CRR 719 CATAPULT 109 (SOD)
3W BR BN COUNTY LINE 7003 ET
JTH SC UNLEASHED KATIE B491

BR NITRO AVENTUS 3116 ET
BR KATHRYN 6816 ET
BR MADELYNN 8017 ET

TH 122 711 VICTOR 719T (SOD)
CRR 4037 ECLIPSE 808
LCX UNLEASHED KEEPSAKE 1110 ET
GF MS KATY 29X
UPS TCC NITRO 1ET (SOD)
BR ABIGAIL 8130 ET
DM BR SOONER (CHB)
BR L1 DOMINETTE 6052

Act. BW
80
Adj. WW
650
Adj. YW
1230
Adj. REA
14.1

CED	BW	WW	YW	SC	Milk	M+G	CEM	Uddr	Teat	Adj. IMF
+1.8	+2.9	+59	+93	+0.7	+25	+55	+0.5	+1.20	+1.20	2.87



CW	Fat	REA	Marb	BMS	BIS	CHBS
+73	+0.01	+48	+0.1	+290	+355	+113

- Stout made and cool on the profile with added bone and hip. 1348 stems from the immortal donor dam Madelynn 8017 and from a direct daughter of Aventus, the full sib to Anastasia.

We encourage you to invest with confidence, knowing that your purchases are backed by a 100% satisfaction guarantee. With the opportunity to buy from two of the most prominent US breeding programs in one place, there is no better time to strengthen your herd. Selecting high performing, efficient bulls to sire your next calf crop is an important economic decision that **YOU** can control.

Thank you for your interest
in our programs!

LOCATIONS

103 FM 55
Waxahachie, TX 75165
972-937-4260
Elevator

441 S College St.
Waxahachie, TX 75165
972-937-1541
Feed Store

RED CHAIN FEEDS

THE BRAND TO TRUST.



Since 1969, Gorman Milling Company has proudly supplied Texas cattle raisers with quality mixed feeds, pellets, cubes, and commodities under the Red Chain Feeds brand name. Whether you own a couple of cows or a couple thousand, we remain dedicated to providing you with the products and expertise needed to help your operation flourish.



REDCHAINFEEDS.COM

GORMAN MILLING COMPANY, INC
Gorman, Texas | (800) 588-2252

STARBAR® INHIBIDOR™ INSECTICIDAL POUR-ON

LARVICIDE, ADULTICIDE AND SYNERGIST COMBINE TO PROTECT CATTLE

Starbar® Inhibidor™ Insecticidal Pour-On is a ready-to-use, triple action solution to defeat insects because we know good things come in threes. By controlling parasitic flies and lice, Inhibidor™ Insecticidal Pour-On can enable more efficient production through keeping your cattle comfortable, while protecting your bottom line.



To learn more about Inhibidor™
Insecticidal Pour-On and the
entire family of Starbar® products,
visit StarbarProducts.com or call
1.800.347.8272.



STOCKMAN WESTERN APPAREL & GIFTS



932 W. Navarro Ave. De Leon, TX 76444



254.893.5149

In-Store or Online

www.shopstockmans.com



Let us take care of your fertilizer needs.

Stockman Seed & Fertilizer, Inc.

932 W. Navarro Ave. • De Leon, TX 76444

254-893-5149

ADD VALUE

WITH FEEDER CATTLE & REPLACEMENT FEMALE PROGRAMS



HEREFORD ADVANTAGE

An industry-changing feeder cattle marketing program through IMI Global to verify and add value to Hereford-influenced feeder cattle with superior genetics, health and management.



MATERNAL ADVANTAGE

A unique marketing program designed to add value to Hereford-sired commercial replacement females with added fertility, feed efficiency, profitability and docility.



PREMIUM RED BALDY

Take advantage of hybrid vigor by maximizing the best traits of Hereford and Red Angus genetics that provide commercial producers with premium replacement females.



LEARN MORE ABOUT
THESE PROGRAMS



AMERICAN HEREFORD ASSOCIATION
816.842.3757 | WWW.HEREFORD.ORG



P.O. Box 31684
Edmond, OK 73003

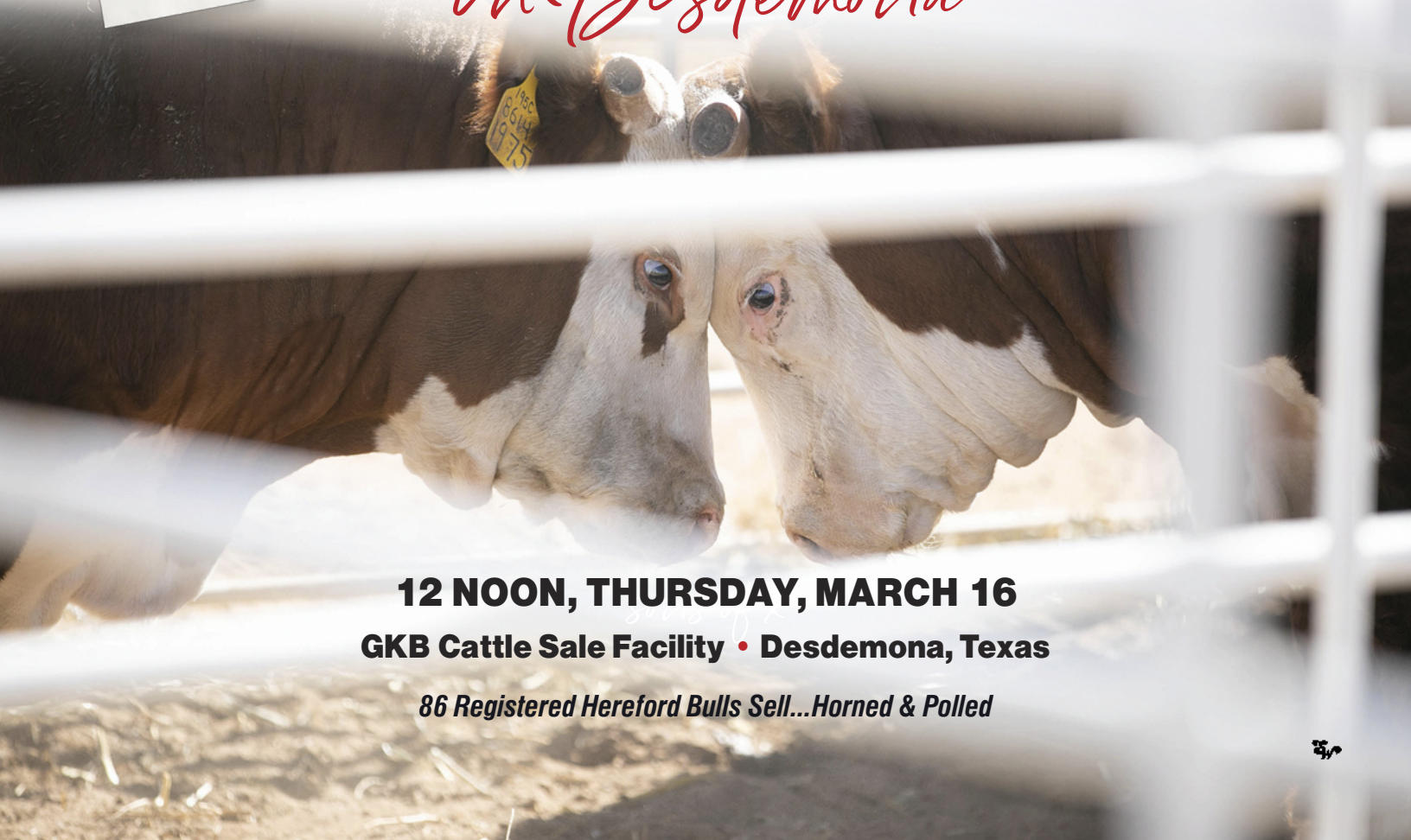
FIRST CLASS MAIL

TIME DATED MATERIAL: PLEASE DO NOT DELAY

PRE-SORTED
FIRST CLASS
U.S. POSTAGE
PAID
SLATE GROUP



THE INAUGURAL
GKB CATTLE & BARBER RANCH
SPRING BULL SALE
in Desdemona



12 NOON, THURSDAY, MARCH 16

GKB Cattle Sale Facility • Desdemona, Texas

86 Registered Hereford Bulls Sell...Horned & Polled

